



**Water Monitoring Result at C7 - Windsor House  
Mid-Flood Tide**

Date	Time	Weather Condition	Sampling Depth		Water Temperature			pH			Salinity			DO Saturation			DO			Turbidity			Suspended Solids	
					°C			-			ppt			%			mg/L			NTU			mg/L	
					Value	Average		Value	Average		Value	Average		Value	Average		Value	Average		Value	Average		Value	Average
28/6/2017	9:30	Fine	Middle	-	27.30	27.30	27.35	7.96	7.96	7.96	26.60	26.60	26.60	81.8	81.5	81.6	5.58	5.56	5.57	3.87	3.88	3.88	2	2.00
	9:32		Middle	-	27.40	27.40		7.96	7.96		26.59	26.59		80.9	82.2		5.52	5.60		3.89	3.87		2	
30/6/2017	11:50	Fine	Middle	-	27.90	27.90	28.00	8.01	8.01	8.01	28.60	28.60	28.60	83.1	83.6	83.5	5.47	5.57	5.55	2.29	2.17	2.20	2	3.00
	11:52		Middle	-	28.10	28.10		8.00	8.00		28.59	28.59		83.6	83.6		5.57	5.57		2.16	2.16		4	
3/7/2017	1:30	Cloudy	Middle	-	27.70	27.70	27.70	7.66	7.66	7.66	24.37	24.37	24.37	73.3	73.1	73.8	5.04	5.02	5.07	3.24	3.22	3.25	<2	<2
	1:31		Middle	-	27.70	27.70		7.66	7.66		24.37	24.37		74.7	74.0		5.13	5.09		3.26	3.29		<2	
6/7/2017	16:00	Cloudy	Middle	-	27.70	27.70	27.75	8.15	8.15	8.15	22.28	22.28	22.28	85.2	85.2	85.1	5.92	5.92	5.91	3.59	3.55	3.56	<2	<2
	16:02		Middle	-	27.80	27.80		8.15	8.15		22.28	22.28		85.2	84.8		5.91	5.89		3.54	3.54		<2	
8/7/2017	17:55	Cloudy	Middle	-	26.80	26.80	26.80	7.79	7.79	7.80	23.56	23.56	23.56	73.6	75.4	74.3	4.98	5.11	5.03	1.78	1.96	1.78	2	2.00
	17:56		Middle	-	26.80	26.80		7.81	7.81		23.56	23.56		74.3	73.7		5.03	4.99		1.70	1.69		2	
10/7/2017	19:45	Cloudy	Middle	-	27.90	27.90	27.90	7.88	7.88	7.89	25.23	25.23	25.23	81.1	82.2	81.7	5.63	5.60	5.59	3.28	3.24	3.30	4	4.50
	19:46		Middle	-	27.90	27.90		7.90	7.90		25.23	25.23		82.3	81.2		5.61	5.53		3.32	3.34		5	
13/7/2017	10:50	Fine	Middle	-	28.30	28.30	28.40	8.14	8.14	8.14	25.27	25.27	25.27	84.8	84.8	84.3	5.73	5.73	5.70	2.73	2.63	2.59	5	5.00
	10:52		Middle	-	28.50	28.50		8.14	8.14		25.27	25.27		84.1	83.6		5.68	5.64		2.53	2.47		5	
15/7/2017	8:40	Fine	Middle	-	27.80	27.80	27.85	8.26	8.26	8.27	25.15	25.15	25.15	85.6	85.8	85.1	5.84	5.86	5.81	2.67	2.52	2.49	2	3.00
	8:42		Middle	-	27.90	27.90		8.27	8.27		25.14	25.14		84.4	84.7		5.76	5.78		2.42	2.34		4	
18/7/2017	-	Amber Rainstorm Warning Signal	Middle	-	-	-	-	-	-	-	-	-	-	-	-	-	-	-	-	-	-	-	-	-
	-		Middle	-	-	-	-	-	-	-	-	-	-	-	-	-	-	-	-	-	-	-	-	-
20/7/2017	17:30	Fine	Middle	-	27.90	27.90	27.90	8.14	8.14	8.13	23.12	23.12	23.11	83.2	84.4	81.6	5.73	5.82	5.62	0.27	0.33	0.35	3	3.50
	17:32		Middle	-	27.90	27.90		8.11	8.11		23.10	23.10		79.0	79.8		5.44	5.50		0.39	0.41		4	
22/7/2017	17:30	Fine	Middle	-	29.60	29.60	29.60	7.78	7.78	7.78	24.64	24.64	24.64	75.5	76.7	76.3	5.02	5.10	5.08	2.74	2.61	2.57	3	2.50
	17:31		Middle	-	29.60	29.60		7.78	7.78		24.64	24.64		75.5	77.6		5.02	5.16		2.49	2.45		2	
24/7/2017	18:00	Cloudy	Middle	-	28.20	28.20	28.20	7.73	7.73	7.75	25.59	25.59	25.59	71.0	71.6	72.0	4.81	4.82	4.87	2.11	2.06	2.05	<2	<2
	18:01		Middle	-	28.20	28.20		7.77	7.77		25.59	25.59		72.2	73.1		4.89	4.95		2.02	2.01		<2	
26/7/2017	4:45	Cloudy	Middle	-	27.70	27.70	27.70	7.78	7.78	7.78	26.88	26.88	26.89	69.2	69.4	68.9	4.69	4.72	4.67	2.12	2.26	2.23	<2	<2
	4:46		Middle	-	27.70	27.70		7.78	7.78		26.89	26.89		68.5	68.5		4.64	4.64		2.39	2.15		<2	

Remarks:  
Single underline denotes exceedance over Action Level.  
Double underline denotes exceedance over Limit Level.



**Water Monitoring Result at C1 - HKCEC Extension  
Mid-Flood Tide**

Date	Time	Weather Condition	Sampling Depth		Water Temperature			pH			Salinity			DO Saturation			DO		Turbidity		Suspended Solids			
					°C			-			ppt			%			mg/L		NTU		mg/L			
					Value	Average		Value	Average		Value	Average		Value	Average		Value	Average		Value	Average	Value	Average	
28/6/2017	-	-	Middle	-	-	-	-	-	-	-	-	-	-	-	-	-	-	-	-	-	-	-	-	
	-		Middle	-	-	-	-	-	-	-	-	-	-	-	-	-	-	-	-	-	-	-	-	-
30/6/2017	-	-	Middle	-	-	-	-	-	-	-	-	-	-	-	-	-	-	-	-	-	-	-	-	-
	-		Middle	-	-	-	-	-	-	-	-	-	-	-	-	-	-	-	-	-	-	-	-	-
3/7/2017	4:50	Cloudy	Middle	3.0	27.20	27.20	27.20	7.93	7.93	7.94	25.22	25.22	25.22	79.6	79.0	79.6	5.49	5.44	5.48	1.77	1.67	1.71	<2	3.00
	4:51		Middle	3.0	27.20	27.20		7.94	7.94		25.22	25.22		80.6	79.1		5.55	5.45		1.69	1.70		3	
6/7/2017	18:20	Cloudy	Middle	3.0	27.10	27.10	27.10	8.20	8.20	8.21	23.48	23.48	23.48	85.9	85.9	85.9	5.99	5.99	5.99	6.74	6.74	6.75	7	6.50
	18:22		Middle	3.0	27.10	27.10		8.21	8.21		23.47	23.47		85.8	85.9		5.98	5.99		6.75	6.77		6	
8/7/2017	19:20	Cloudy	Middle	3.0	26.70	26.70	26.70	7.71	7.71	7.73	24.97	24.97	24.97	76.9	78.8	77.3	5.18	5.31	5.21	4.22	4.08	4.22	7	7.00
	19:21		Middle	3.0	26.70	26.70		7.74	7.74		24.97	24.97		76.6	77.0		5.15	5.18		4.19	4.40		7	
10/7/2017	22:01	Cloudy	Middle	3.0	27.50	27.50	27.50	7.68	7.68	7.69	26.31	26.31	26.31	80.4	80.4	80.0	5.39	5.39	5.37	3.22	3.31	3.34	5	4.50
	20:02		Middle	3.0	27.50	27.50		7.70	7.69		26.31	26.31		80.0	79.2		5.37	5.31		3.38	3.44		4	
13/7/2017	10:35	Fine	Middle	3.0	27.10	27.10	27.15	8.19	8.19	8.20	28.14	28.14	28.14	85.5	85.7	85.5	5.81	5.82	5.81	1.60	1.66	1.69	7	6.00
	10:37		Middle	3.0	27.20	27.20		8.20	8.20		28.14	28.14		85.4	85.4		5.81	5.81		1.72	1.77		5	
15/7/2017	10:35	Fine	Middle	3.0	27.80	27.80	27.80	8.37	8.37	8.37	25.97	25.97	25.97	86.4	86.7	86.5	5.88	5.90	5.89	2.50	2.50	2.48	5	5.50
	10:37		Middle	3.0	27.80	27.80		8.37	8.37		25.97	25.97		86.6	86.4		5.89	5.88		2.46	2.46		6	
18/7/2017	-	Amber Rainstorm Warning Signal	Middle	-	-	-	-	-	-	-	-	-	-	-	-	-	-	-	-	-	-	-	-	-
	-		Middle	-	-	-	-	-	-	-	-	-	-	-	-	-	-	-	-	-	-	-	-	-
20/7/2017	16:35	Fine	Middle	2.5	28.20	28.20	28.25	8.29	8.29	8.30	23.47	23.47	23.48	97.1	97.2	96.9	6.64	6.66	6.62	1.98	1.82	1.92	6	5.00
	16:37		Middle	2.5	28.30	28.30		8.30	8.30		23.48	23.48		96.6	96.5		6.60	6.59		1.91	1.97		4	
22/7/2017	21:05	Fine	Middle	2.5	27.10	27.10	27.10	7.93	7.93	7.93	25.59	25.59	25.59	74.7	75.6	75.0	5.14	5.20	5.16	3.45	3.52	3.64	8	6.00
	21:06		Middle	2.5	27.10	27.10		7.93	7.93		25.59	25.59		75.0	74.8		5.16	5.15		3.89	3.70		4	
24/7/2017	20:25	Cloudy	Middle	2.5	27.60	27.60	27.60	7.82	7.82	7.82	26.47	26.47	26.47	67.1	67.9	67.3	4.56	4.58	4.57	4.21	4.35	4.32	5	5.00
	20:26		Middle	2.5	27.60	27.60		7.82	7.82		26.47	26.47		67.3	67.0		4.57	4.56		4.31	4.39		5	
26/7/2017	8:15	Cloudy	Middle	2.5	27.40	27.40	27.40	7.86	7.86	7.87	26.18	26.18	26.18	71.2	71.6	71.0	4.87	4.89	4.85	1.77	1.98	1.83	<2	<2
	8:16		Middle	2.5	27.40	27.40		7.87	7.87		26.18	26.18		71.3	70.0		4.87	4.78		1.90	1.66		<2	

Remarks:  
 Single underline denotes exceedance over Action Level.  
 Double underline denotes exceedance over Limit Level.  
 With respect to site closure and suspension of construction activities at Wanchai area, the Water Quality Monitoring Event at WQM stations WSD19, P1, P3, P4, P5 and C1 was temporary suspended from 27 June 2017 to 01 July 2017.



**Water Monitoring Result at P1 - HKCEC Phase I  
Mid-Flood Tide**

Date	Time	Weather Condition	Sampling Depth		Water Temperature			pH			Salinity			DO Saturation			DO		Turbidity		Suspended Solids			
					°C			-			ppt			%			mg/L		NTU		mg/L			
					Value	Average		Value	Average		Value	Average		Value	Average		Value	Average		Value	Average	Value	Average	
28/6/2017	-	-	Middle	-	-	-	-	-	-	-	-	-	-	-	-	-	-	-	-	-	-	-	-	
	-		Middle	-	-	-	-	-	-	-	-	-	-	-	-	-	-	-	-	-	-	-	-	-
30/6/2017	-	-	Middle	-	-	-	-	-	-	-	-	-	-	-	-	-	-	-	-	-	-	-	-	
	-		Middle	-	-	-	-	-	-	-	-	-	-	-	-	-	-	-	-	-	-	-	-	-
3/7/2017	4:20	Cloudy	Middle	3.0	27.50	27.50	27.50	7.97	7.97	7.97	26.00	26.00	26.00	79.0	80.9	80.3	5.40	5.53	5.49	3.20	3.10	3.11	3	2.50
	4:21		Middle	3.0	27.50	27.50	27.50	7.97	7.97	7.97	26.00	26.00	26.00	81.2	80.1	80.3	5.55	5.48	5.49	3.07	3.05	3.11	2	2.50
6/7/2017	18:00	Cloudy	Middle	3.0	27.40	27.40	27.40	8.06	8.06	8.08	24.12	24.12	24.12	86.5	86.3	86.2	5.98	5.97	5.96	3.66	3.70	3.74	5	4.00
	18:02		Middle	3.0	27.40	27.40	27.40	8.10	8.10	8.08	24.12	24.12	24.12	86.1	85.9	86.2	5.95	5.94	5.96	3.72	3.89	3.74	3	4.00
8/7/2017	18:50	Cloudy	Middle	3.0	26.70	26.70	26.70	7.79	7.79	7.80	24.85	24.85	24.85	78.5	77.7	77.4	5.29	5.24	5.22	2.26	2.13	2.15	2	2.50
	18:51		Middle	3.0	26.70	26.70	26.70	7.80	7.80	7.80	24.85	24.85	24.85	76.5	76.7	77.4	5.17	5.17	5.22	2.12	2.10	2.15	3	2.50
10/7/2017	21:30	Cloudy	Middle	3.0	27.50	27.50	27.50	7.87	7.87	7.87	26.42	26.42	26.42	78.7	79.7	78.7	5.28	5.34	5.29	3.73	3.77	3.80	5	5.00
	21:31		Middle	3.0	27.50	27.50	27.50	7.87	7.87	7.87	26.42	26.42	26.42	78.5	77.7	78.7	5.27	5.25	5.29	3.82	3.88	3.80	5	5.00
13/7/2017	10:15	Fine	Middle	3.0	28.70	28.70	28.80	8.09	8.09	8.11	27.60	27.60	27.60	86.1	86.6	86.3	5.71	5.74	5.97	2.04	2.01	2.04	4	3.50
	10:17		Middle	3.0	28.90	28.90	28.80	8.12	8.12	8.11	27.60	27.60	27.60	85.9	86.6	86.3	5.69	6.73	5.97	2.03	2.06	2.04	3	3.50
15/7/2017	10:15	Fine	Middle	3.0	28.40	28.40	28.45	8.20	8.20	8.24	25.36	25.36	25.36	89.1	90.1	88.7	6.00	6.07	5.97	1.79	1.97	1.81	3	2.50
	10:17		Middle	3.0	28.60	28.40	28.45	8.28	8.28	8.24	25.35	25.35	25.36	88.4	87.3	88.7	5.95	5.87	5.97	1.78	1.69	1.81	2	2.50
18/7/2017	-	Amber Rainstorm Warning Signal	Middle	-	-	-	-	-	-	-	-	-	-	-	-	-	-	-	-	-	-	-	-	
	-		Middle	-	-	-	-	-	-	-	-	-	-	-	-	-	-	-	-	-	-	-	-	-
20/7/2017	16:08	Fine	Middle	2.5	28.30	28.30	28.35	8.09	8.09	8.10	23.75	23.75	23.75	91.4	90.8	90.7	6.23	6.19	6.18	4.62	4.63	4.57	5	5.00
	16:10		Middle	2.5	28.40	28.40	28.35	8.11	8.11	8.10	23.75	23.75	23.75	90.1	90.4	90.7	6.14	6.16	6.18	4.51	4.50	4.57	5	5.00
22/7/2017	20:12	Fine	Middle	2.5	27.80	27.80	27.80	7.76	7.76	7.78	25.43	25.43	25.43	75.4	76.3	75.6	5.14	5.20	5.15	2.59	2.62	2.65	4	4.00
	20:13		Middle	2.5	27.80	27.80	27.80	7.80	7.80	7.78	25.43	25.43	25.43	76.1	74.4	75.6	5.19	5.07	5.15	2.68	2.72	2.65	4	4.00
24/7/2017	20:00	Cloudy	Middle	2.5	27.90	27.90	27.90	7.90	7.90	7.90	26.46	26.46	26.46	78.9	79.1	78.8	5.34	5.35	5.33	2.37	2.39	2.48	3	3.00
	20:01		Middle	2.5	27.90	27.90	27.90	7.89	7.90	7.90	26.46	26.46	26.46	78.1	78.9	78.8	5.29	5.33	5.33	2.34	2.80	2.48	3	3.00
26/7/2017	5:31	Cloudy	Middle	2.5	27.40	27.40	27.40	7.89	7.89	7.89	26.24	26.24	26.24	73.2	73.7	73.5	5.00	5.03	5.02	1.82	1.80	1.85	3	3.00
	5:32		Middle	2.5	27.40	27.40	27.40	7.90	7.89	7.89	26.24	26.24	26.24	73.6	73.4	73.5	5.02	5.01	5.02	1.84	1.95	1.85	<2	3.00

Remarks:  
 Single underline denotes exceedance over Action Level.  
 Double underline denotes exceedance over Limit Level.  
 With respect to site closure and suspension of construction activities at Wanchai area, the Water Quality Monitoring Event at WQM stations WSD19, P1, P3, P4, P5 and C1 was temporary suspended from 27 June 2017 to 01 July 2017.



**Water Monitoring Result at P3 - APA  
Mid-Flood Tide**

Date	Time	Weather Condition	Sampling Depth		Water Temperature			pH			Salinity			DO Saturation			DO		Turbidity		Suspended Solids			
					°C			-			ppt			%			mg/L		NTU		mg/L			
					Value	Average		Value	Average		Value	Average		Value	Average		Value	Average		Value	Average	Value	Average	
28/6/2017	-	-	Middle	-	-	-	-	-	-	-	-	-	-	-	-	-	-	-	-	-	-	-	-	
	-		Middle	-	-	-	-	-	-	-	-	-	-	-	-	-	-	-	-	-	-	-	-	-
30/6/2017	-	-	Middle	-	-	-	-	-	-	-	-	-	-	-	-	-	-	-	-	-	-	-	-	-
	-		Middle	-	-	-	-	-	-	-	-	-	-	-	-	-	-	-	-	-	-	-	-	-
3/7/2017	4:27	Cloudy	Middle	3.0	27.60	27.60	27.60	7.95	7.95	7.96	26.92	26.92	26.93	80.7	80.9	80.2	5.55	5.57	5.50	2.61	2.64	2.64	3	2.50
	4:28		Middle	3.0	27.60	27.60	27.60	7.96	7.96	7.96	26.93	26.93	26.93	79.5	79.7	80.2	5.42	5.44	5.50	2.66	2.65	2.64	2	2.50
6/7/2017	18:05	Cloudy	Middle	3.0	27.20	27.20	27.20	8.14	8.14	8.15	23.76	23.76	23.76	86.5	86.3	85.6	5.87	5.91	5.89	5.37	5.44	5.49	6	5.50
	18:07		Middle	3.0	27.20	27.20	27.20	8.15	8.15	8.15	23.76	23.76	23.76	84.8	84.6	85.6	5.89	5.87	5.89	5.57	5.58	5.49	5	5.50
8/7/2017	18:58	Cloudy	Middle	3.0	27.00	27.00	27.00	7.82	7.82	7.82	24.81	24.81	24.81	73.0	74.8	74.3	4.90	5.02	4.98	2.03	2.05	2.04	3	3.00
	18:59		Middle	3.0	27.00	27.00	27.00	7.82	7.82	7.82	24.81	24.81	24.81	74.7	74.6	74.3	5.01	5.00	4.98	2.06	2.01	2.04	3	3.00
10/7/2017	21:35	Cloudy	Middle	3.0	27.60	27.60	27.60	7.91	7.91	7.92	26.27	26.27	26.27	78.0	78.2	78.4	5.22	5.31	5.27	2.89	2.87	2.86	6	6.00
	21:36		Middle	3.0	27.60	27.60	27.60	7.92	7.92	7.92	26.27	26.27	26.27	79.1	78.1	78.4	5.30	5.23	5.27	2.84	2.82	2.86	6	6.00
13/7/2017	10:20	Fine	Middle	3.0	28.00	28.00	28.00	8.16	8.16	8.17	26.86	26.86	26.86	88.5	88.6	88.3	5.96	5.97	5.95	1.75	1.74	1.75	3	2.50
	10:22		Middle	3.0	28.10	28.10	28.10	8.18	8.18	8.17	26.86	26.86	26.86	88.1	88.1	88.3	5.93	5.93	5.95	1.75	1.75	1.75	2	2.50
15/7/2017	10:20	Fine	Middle	3.0	27.90	27.90	27.90	8.30	8.30	8.32	25.96	25.96	25.97	88.8	88.7	88.8	6.02	6.01	6.02	2.69	2.70	2.86	6	5.00
	10:22		Middle	3.0	28.00	28.00	28.00	8.33	8.33	8.32	25.96	25.60	25.87	89.2	88.6	88.8	6.04	6.00	6.02	3.04	3.00	2.86	4	5.00
18/7/2017	-	Amber Rainstorm Warning Signal	Middle	-	-	-	-	-	-	-	-	-	-	-	-	-	-	-	-	-	-	-	-	-
	-		Middle	-	-	-	-	-	-	-	-	-	-	-	-	-	-	-	-	-	-	-	-	-
20/7/2017	16:15	Fine	Middle	2.5	28.10	28.10	28.10	8.16	8.16	8.18	23.57	23.57	23.49	95.3	95.9	95.3	6.53	6.57	6.53	1.08	1.12	1.01	4	4.00
	16:17		Middle	2.5	28.10	28.10	28.10	8.19	8.19	8.18	23.41	23.41	23.49	94.9	95.1	95.3	6.49	6.52	6.53	0.89	0.93	1.01	4	4.00
22/7/2017	20:22	Fine	Middle	2.5	27.70	27.70	27.70	7.88	7.88	7.89	25.54	25.54	25.54	72.6	72.9	72.8	4.95	4.97	4.97	2.39	2.58	2.49	4	4.00
	20:23		Middle	2.5	27.70	27.70	27.70	7.89	7.89	7.89	25.54	25.54	25.54	72.5	73.1	72.8	4.95	4.99	4.97	2.60	2.37	2.49	4	4.00
24/7/2017	20:05	Cloudy	Middle	2.5	27.70	27.70	27.70	7.88	7.88	7.88	26.52	26.52	26.52	74.3	74.1	74.0	5.04	5.03	5.02	2.12	2.10	2.18	<2	3.00
	20:06		Middle	2.5	27.70	27.70	27.70	7.87	7.87	7.88	26.52	26.52	26.52	73.2	74.2	74.0	4.97	5.04	5.02	2.28	2.20	2.18	3	3.00
26/7/2017	5:34	Cloudy	Middle	2.5	27.40	27.40	27.40	7.91	7.91	7.91	26.25	26.25	26.25	73.3	74.3	74.1	5.01	5.07	5.06	1.38	1.24	1.23	<2	<2
	5:35		Middle	2.5	27.40	27.40	27.40	7.91	7.91	7.91	26.25	26.25	26.25	74.2	74.6	74.1	5.07	5.09	5.06	1.18	1.10	1.23	<2	<2

Remarks:

Single underline denotes exceedance over Action Level.  
Double underline denotes exceedance over Limit Level.

With respect to site closure and suspension of construction activities at Wanchai area, the Water Quality Monitoring Event at WQM stations WSD19, P1, P3, P4, P5 and C1 was temporary suspended from 27 June 2017 to 01 July 2017.



**Water Monitoring Result at P4 - SOC  
Mid-Flood Tide**

Date	Time	Weather Condition	Sampling Depth		Water Temperature			pH			Salinity			DO Saturation			DO		Turbidity			Suspended Solids		
					°C			-			ppt			%			mg/L		NTU			mg/L		
					Value	Average		Value	Average		Value	Average		Value	Average		Value	Average		Value	Average	Value	Average	Value
28/6/2017	-	-	Middle	-	-	-	-	-	-	-	-	-	-	-	-	-	-	-	-	-	-	-	-	
	-		Middle	-	-	-	-	-	-	-	-	-	-	-	-	-	-	-	-	-	-	-	-	-
30/6/2017	-	-	Middle	-	-	-	-	-	-	-	-	-	-	-	-	-	-	-	-	-	-	-	-	
	-		Middle	-	-	-	-	-	-	-	-	-	-	-	-	-	-	-	-	-	-	-	-	-
3/7/2017	4:35	Cloudy	Middle	3.0	27.30	27.30	27.30	7.96	7.96	7.97	26.26	26.26	26.26	80.4	80.3	80.3	5.57	5.55	5.52	2.45	2.41	2.41	2	2.00
	4:36		Middle	3.0	27.30	27.30	27.30	7.97	7.97	7.97	26.26	26.26	26.26	79.9	80.5	80.3	5.45	5.51	5.52	2.40	2.37	2.41	<2	2.00
6/7/2017	18:10	Cloudy	Middle	3.0	27.10	27.10	27.10	8.16	8.16	8.17	23.41	23.41	23.43	84.3	84.1	84.3	5.88	5.87	5.88	6.24	6.15	6.20	5	5.50
	18:12		Middle	3.0	27.10	27.10	27.10	8.18	8.18	8.17	23.45	23.45	23.43	83.9	84.7	84.3	5.85	5.90	5.88	6.20	6.21	6.20	6	5.50
8/7/2017	19:05	Cloudy	Middle	3.0	26.80	26.80	26.80	7.82	7.82	7.82	25.04	25.04	25.04	75.1	74.6	74.8	5.05	5.00	5.02	5.17	5.14	5.13	8	8.00
	19:06		Middle	3.0	26.80	26.80	26.80	7.82	7.82	7.82	25.04	25.04	25.04	75.1	74.4	74.8	5.05	4.98	5.02	5.12	5.10	5.13	8	8.00
10/7/2017	21:42	Cloudy	Middle	3.0	27.80	27.80	27.80	7.93	7.94	7.93	26.26	26.26	26.26	78.7	79.2	78.8	5.25	5.26	5.26	2.89	2.87	2.85	5	4.50
	21:43		Middle	3.0	27.80	27.80	27.80	7.93	7.93	7.93	26.26	26.26	26.26	78.3	79.1	78.8	5.23	5.28	5.26	2.82	2.80	2.85	4	4.50
13/7/2017	10:25	Fine	Middle	3.0	27.40	27.40	27.50	8.18	8.18	8.19	27.55	27.55	27.55	87.3	87.4	87.4	5.92	5.93	5.92	2.36	2.29	2.21	4	4.50
	10:27		Middle	3.0	27.60	27.60	27.50	8.19	8.19	8.19	27.54	27.54	27.55	87.2	87.5	87.4	5.90	5.93	5.92	2.12	2.08	2.21	5	4.50
15/7/2017	10:25	Fine	Middle	3.0	27.70	27.70	27.75	8.35	8.35	8.36	25.92	25.92	25.92	88.3	88.2	88.2	6.03	6.02	6.01	2.26	2.16	2.20	6	5.00
	10:27		Middle	3.0	27.80	27.80	27.75	8.37	8.37	8.36	25.92	25.92	25.92	88.7	87.5	88.2	6.04	5.95	6.01	2.16	2.21	2.20	4	5.00
18/7/2017	-	Amber Rainstorm Warning Signal	Middle	-	-	-	-	-	-	-	-	-	-	-	-	-	-	-	-	-	-	-	-	
	-		Middle	-	-	-	-	-	-	-	-	-	-	-	-	-	-	-	-	-	-	-	-	-
20/7/2017	16:20	Fine	Middle	2.5	28.20	28.20	28.20	8.24	8.24	8.25	23.45	23.48	23.46	99.4	98.7	98.7	6.80	6.73	6.74	1.32	1.33	1.50	4	4.00
	16:22		Middle	2.5	28.20	28.20	28.20	8.26	8.26	8.25	23.46	23.46	23.46	98.2	98.3	98.7	6.71	6.71	6.74	1.62	1.72	1.50	4	4.00
22/7/2017	20:50	Fine	Middle	2.5	27.20	27.20	27.20	7.91	7.91	7.91	25.65	25.65	25.65	73.2	72.8	72.9	4.97	5.01	5.00	2.18	2.12	2.10	6	5.50
	20:51		Middle	2.5	27.20	27.20	27.20	7.91	7.91	7.91	25.65	25.65	25.65	72.4	73.1	72.9	4.98	5.02	5.00	2.07	2.03	2.10	5	5.50
24/7/2017	20:12	Cloudy	Middle	2.5	27.60	27.60	27.60	7.87	7.87	7.87	26.50	26.50	26.50	70.8	71.4	70.6	4.82	4.86	4.82	3.68	3.58	3.62	4	4.00
	20:13		Middle	2.5	27.60	27.60	27.60	7.87	7.87	7.87	26.50	26.50	26.50	70.2	70.0	70.6	4.78	4.80	4.82	3.61	3.62	3.62	4	4.00
26/7/2017	5:38	Cloudy	Middle	2.5	27.40	27.40	27.40	7.92	7.92	7.92	26.21	26.21	26.21	71.0	70.7	71.1	4.85	4.83	4.86	2.01	2.60	2.45	<2	<2
	5:39		Middle	2.5	27.40	27.40	27.40	7.91	7.91	7.92	26.21	26.21	26.21	71.0	71.8	71.1	4.85	4.90	4.86	2.49	2.70	2.45	<2	<2

Remarks:

Single underline denotes exceedance over Action Level.  
Double underline denotes exceedance over Limit Level.

With respect to site closure and suspension of construction activities at Wanchai area, the Water Quality Monitoring Event at WQM stations WSD19, P1, P3, P4, P5 and C1 was temporary suspended from 27 June 2017 to 01 July 2017.



**Water Monitoring Result at P5 - WCT / RT / IT  
Mid-Flood Tide**

Date	Time	Weather Condition	Sampling Depth		Water Temperature			pH			Salinity			DO Saturation			DO		Turbidity			Suspended Solids		
					°C			-			ppt			%			mg/L		NTU			mg/L		
					Value	Average		Value	Average		Value	Average		Value	Average		Value	Average		Value	Average	Value	Average	Value
28/6/2017	-		Middle	-	-	-	-	-	-	-	-	-	-	-	-	-	-	-	-	-	-	-	-	
	-		Middle	-	-	-	-	-	-	-	-	-	-	-	-	-	-	-	-	-	-	-	-	-
30/6/2017	-		Middle	-	-	-	-	-	-	-	-	-	-	-	-	-	-	-	-	-	-	-	-	
	-		Middle	-	-	-	-	-	-	-	-	-	-	-	-	-	-	-	-	-	-	-	-	-
3/7/2017	4:45	Cloudy	Middle	3.0	27.20	27.20	27.20	7.86	7.86	7.87	25.81	25.81	25.81	75.2	75.3	75.0	5.17	5.17	5.15	1.98	1.86	1.92	<2	<2
	4:46		Middle	3.0	27.20	27.20	27.20	7.88	7.88	7.87	25.81	25.81	25.81	74.5	75.1	75.0	5.11	5.15	5.15	1.84	1.99	1.92	<2	<2
6/7/2017	18:15	Cloudy	Middle	3.0	27.10	27.10	27.10	8.18	8.18	8.19	23.38	23.38	23.36	81.1	81.8	82.0	5.66	5.70	5.72	6.46	6.45	6.46	6	6.00
	18:17		Middle	3.0	27.10	27.10	27.10	8.19	8.19	8.19	23.39	23.30	23.36	82.4	82.5	82.0	5.75	5.76	5.72	6.47	6.45	6.46	6	6.00
8/7/2017	19:13	Cloudy	Middle	3.0	27.00	27.00	27.00	7.82	7.82	7.82	25.00	25.00	25.00	76.1	77.5	76.7	5.10	5.20	5.14	4.77	4.70	4.81	6	6.50
	19:14		Middle	3.0	27.00	27.00	27.00	7.82	7.82	7.82	25.00	25.00	25.00	75.5	77.6	76.7	5.06	5.20	5.14	4.90	4.87	4.81	7	6.50
10/7/2017	21:53	Cloudy	Middle	3.0	27.70	27.70	27.70	7.94	7.94	7.94	26.29	26.29	26.29	77.3	78.3	78.1	5.17	5.23	5.22	3.33	3.45	3.40	4	6.00
	21:54		Middle	3.0	27.70	27.70	27.70	7.94	7.94	7.94	26.29	26.29	26.29	79.0	77.9	78.1	5.28	5.20	5.22	3.43	3.39	3.40	8	6.00
13/7/2017	10:30	Fine	Middle	3.0	27.10	27.10	27.20	8.19	8.19	8.20	27.82	27.82	27.82	87.4	87.4	87.5	5.94	5.94	5.93	2.09	2.07	2.12	2	2.50
	10:32		Middle	3.0	27.30	27.30	27.20	8.20	8.20	8.20	27.82	27.82	27.82	87.7	87.5	87.5	5.95	5.87	5.93	2.08	2.25	2.12	3	2.50
15/7/2017	10:30	Fine	Middle	3.0	27.60	27.60	27.65	8.37	8.37	8.35	25.98	25.98	25.98	87.0	87.7	87.1	5.93	5.97	5.93	1.98	2.00	2.01	4	3.00
	10:32		Middle	3.0	27.70	27.70	27.65	8.33	8.33	8.35	25.98	25.98	25.98	87.3	86.3	87.1	5.95	5.88	5.93	2.05	2.00	2.01	2	3.00
18/7/2017	-	Amber Rainstorm Warning Signal	Middle	-	-	-	-	-	-	-	-	-	-	-	-	-	-	-	-	-	-	-	-	
	-		Middle	-	-	-	-	-	-	-	-	-	-	-	-	-	-	-	-	-	-	-	-	-
20/7/2017	16:29	Fine	Middle	2.5	28.10	28.00	28.13	8.28	8.28	8.29	23.43	23.43	23.44	97.5	98.0	96.8	6.68	6.71	6.62	1.12	1.00	1.17	6	7.00
	16:31		Middle	2.5	28.20	28.20	28.13	8.29	8.29	8.29	23.44	23.44	23.44	97.2	94.3	96.8	6.64	6.45	6.62	1.23	1.33	1.17	8	7.00
22/7/2017	20:57	Fine	Middle	2.5	27.10	27.10	27.15	7.91	7.91	7.91	25.61	25.61	25.62	76.2	76.9	76.4	5.24	5.29	5.26	2.89	2.99	2.97	3	3.00
	20:58		Middle	2.5	27.20	27.20	27.15	7.91	7.91	7.91	25.63	25.63	25.62	76.2	76.3	76.4	5.24	5.25	5.26	3.01	2.98	2.97	3	3.00
24/7/2017	20:21	Cloudy	Middle	2.5	27.40	27.40	27.40	7.88	7.88	7.88	26.57	26.57	26.57	68.0	69.0	68.1	4.64	4.70	4.64	4.55	4.50	4.51	4	4.50
	20:22		Middle	2.5	27.40	27.40	27.40	7.88	7.88	7.88	26.57	26.57	26.57	67.6	67.7	68.1	4.61	4.62	4.64	4.43	4.54	4.51	5	4.50
26/7/2017	5:42	Cloudy	Middle	3.5	27.40	27.40	27.40	7.91	7.91	7.92	26.21	26.21	26.22	70.5	70.9	70.9	4.82	4.85	4.87	2.10	2.05	2.18	<2	<2
	5:53		Middle	3.5	27.40	27.40	27.40	7.92	7.92	7.92	26.22	26.22	26.22	70.9	71.2	70.9	4.85	4.97	4.87	2.30	2.28	2.18	<2	<2

Remarks:

Single underline denotes exceedance over Action Level.  
Double underline denotes exceedance over Limit Level.

With respect to site closure and suspension of construction activities at Wanchai area, the Water Quality Monitoring Event at WQM stations WSD19, P1, P3, P4, P5 and C1 was temporary suspended from 27 June 2017 to 01 July 2017.



**Water Monitoring Result at RW21-P789 - GEC/CRB/SHK  
Mid-Flood Tide**

Date	Time	Weather Condition	Sampling Depth		Water Temperature			pH			Salinity			DO Saturation		DO		Turbidity		Suspended Solids				
					°C			-			ppt			%		mg/L		NTU		mg/L				
			m	Value	Average	Value	Average	Value	Average	Value	Average	Value	Average	Value	Average	Value	Average	Value	Average	Value	Average			
28/6/2017	8:20	Fine	Middle	3.5	26.20	26.20	26.25	7.85	7.85	7.88	28.55	28.55	28.55	71.8	71.7	71.6	4.94	4.93	4.92	4.11	4.11	4.11	3	4.00
	8:22		Middle	3.5	26.30	26.30		7.90	7.90		28.55	28.55		71.4	71.5		4.91	4.91		4.12	4.11		5	
30/6/2017	10:10	Fine	Middle	4.0	28.70	28.70	29.00	7.86	7.86	7.90	28.99	28.99	28.99	82.2	82.5	82.2	5.38	5.39	5.37	3.18	3.17	3.12	4	3.00
	10:12		Middle	4.0	29.30	29.30		7.93	7.93		28.99	28.99		82.4	81.6		5.38	5.33		3.13	3.01		2	
3/7/2017	3:10	Cloudy	Middle	4.0	27.40	27.40	27.40	7.71	7.71	7.71	25.52	25.52	25.52	80.5	79.4	79.3	5.51	5.45	5.43	2.91	2.87	2.87	<2	<2
	3:11		Middle	4.0	27.40	27.40		7.71	7.71		25.52	25.52		78.9	78.2		5.39	5.36		2.86	2.82		<2	
6/7/2017	15:30	Cloudy	Middle	3.5	28.40	28.40	28.40	8.18	8.18	8.20	22.03	22.03	22.03	94.1	93.7	93.6	6.47	6.45	6.44	3.32	3.39	3.18	4	4.00
	15:32		Middle	3.5	28.40	28.40		8.22	8.22		22.02	22.02		93.2	93.3		6.41	6.42		3.51	2.49		4	
8/7/2017	18:30	Cloudy	Middle	4.0	27.00	27.00	27.00	7.66	7.66	7.66	24.85	24.85	24.85	72.2	72.3	72.0	4.86	4.87	4.85	1.56	1.54	1.56	3	3.50
	18:31		Middle	4.0	27.00	27.00		7.66	7.66		24.85	24.85		71.9	71.6		4.84	4.82		1.52	1.60		4	
10/7/2017	20:30	Cloudy	Middle	4.0	27.30	27.30	27.33	7.70	7.70	7.70	26.05	26.05	26.05	88.1	89.6	90.5	6.02	6.12	6.18	3.96	3.98	3.99	5	5.00
	20:31		Middle	4.0	27.40	27.30		7.70	7.70		26.05	26.05		93.5	90.6		6.39	6.19		4.01	4.00		5	
13/7/2017	9:35	Fine	Middle	4.0	28.20	28.20	28.25	8.16	8.16	8.19	25.80	25.80	25.80	92.8	92.7	92.4	6.26	6.26	6.24	1.82	1.93	1.91	3	3.50
	9:37		Middle	4.0	28.30	28.30		8.21	8.21		25.79	25.79		92.6	91.5		6.25	6.18		1.95	1.92		4	
15/7/2017	10:45	Fine	Middle	4.0	27.50	27.50	27.55	8.33	8.33	8.35	25.84	25.84	25.84	88.6	88.6	88.6	6.05	6.06	6.05	1.35	1.51	1.57	<2	<2
	10:47		Middle	4.0	27.60	27.60		8.36	8.36		25.84	25.84		88.9	88.3		6.06	6.02		1.64	1.79		<2	
18/7/2017	-	Amber Rainstorm Warning Signal	Middle	-	-	-	-	-	-	-	-	-	-	-	-	-	-	-	-	-	-	-	-	
	-		Middle	-	-	-	-	-	-	-	-	-	-	-	-	-	-	-	-	-	-	-	-	-
20/7/2017	17:05	Fine	Middle	3.5	27.80	27.80	27.85	8.29	8.29	8.28	23.55	23.55	23.55	99.6	98.9	98.7	6.86	6.81	6.80	0.75	0.58	0.60	4	4.00
	17:07		Middle	3.5	27.90	27.90		8.25	8.29		23.55	23.55		98.4	97.7		6.78	6.73		0.58	0.49		4	
22/7/2017	18:07	Fine	Middle	3.5	28.20	28.20	28.25	7.78	7.78	7.80	25.31	25.31	25.31	76.8	77.6	77.1	5.20	5.26	5.22	3.46	3.38	3.40	4	3.50
	18:08		Middle	3.5	28.30	28.30		7.81	7.81		25.31	25.31		77.3	76.5		5.23	5.17		3.36	3.40		3	
24/7/2017	19:40	Cloudy	Middle	3.5	27.60	27.60	27.60	7.81	7.81	7.81	26.10	26.10	26.10	73.0	76.3	75.0	4.97	5.19	5.11	2.16	2.14	2.19	2	2.00
	19:41		Middle	3.5	27.60	27.60		7.81	7.81		26.10	26.10		74.8	76.0		5.09	5.18		2.21	2.25		<2	
26/7/2017	5:03	Cloudy	Middle	3.5	27.70	27.70	27.70	7.82	7.82	7.84	26.99	26.99	26.99	72.9	71.7	72.9	4.93	4.86	4.94	2.38	2.32	2.32	2	2.00
	5:04		Middle	3.5	27.70	27.70		7.85	7.85		26.99	26.99		73.1	73.9		4.95	5.01		2.28	2.29		2	

Remarks:  
Single underline denotes exceedance over Action Level.  
Double underline denotes exceedance over Limit Level.



**Water Monitoring Result at WSD19 - Sheung Wan  
Mid-Flood Tide**

Date	Time	Weather Condition	Sampling Depth		Water Temperature			pH			Salinity			DO Saturation			DO		Turbidity		Suspended Solids			
					°C			-			ppt			%			mg/L		NTU		mg/L			
					Value	Average		Value	Average		Value	Average		Value	Average		Value	Average	Value	Average	Value	Average	Value	Average
28/6/2017	-	-	Middle	-	-	-	-	-	-	-	-	-	-	-	-	-	-	-	-	-	-	-	-	
	-		Middle	-	-	-	-	-	-	-	-	-	-	-	-	-	-	-	-	-	-	-	-	-
30/6/2017	-	-	Middle	-	-	-	-	-	-	-	-	-	-	-	-	-	-	-	-	-	-	-	-	
	-		Middle	-	-	-	-	-	-	-	-	-	-	-	-	-	-	-	-	-	-	-	-	-
3/7/2017	3:35	Cloudy	Middle	4.0	27.40	27.40	27.40	7.87	7.87	7.88	24.50	24.50	24.50	80.1	80.0	80.0	5.53	5.52	5.52	3.08	2.92	2.88	<2	2.00
	3:36		Middle	4.0	27.40	27.40	27.40	7.88	7.88	7.88	24.50	24.50	24.50	79.1	80.6	80.0	5.46	5.55	5.52	2.77	2.74	2.88	2	2.00
6/7/2017	16:15	Cloudy	Middle	4.0	27.20	27.20	27.30	8.07	8.07	8.05	24.28	24.28	24.27	79.9	79.7	79.6	5.52	5.51	5.50	3.41	3.31	3.34	4	4.00
	16:17		Middle	4.0	27.40	27.40	27.30	8.03	8.03	8.05	24.26	24.26	24.27	79.3	79.3	79.6	5.48	5.48	5.50	3.31	3.31	3.34	4	4.00
8/7/2017	20:07	Cloudy	Middle	4.0	27.00	27.00	27.00	7.76	7.76	7.77	25.35	25.36	25.35	73.2	75.3	74.5	4.92	5.04	4.99	1.43	1.41	1.53	3	3.00
	20:08		Middle	4.0	27.00	27.00	27.00	7.77	7.77	7.77	25.35	25.35	25.35	74.1	75.4	74.5	4.95	5.04	4.99	1.68	1.61	1.53	3	3.00
10/7/2017	20:55	Cloudy	Middle	4.0	27.80	27.80	27.85	7.69	7.69	7.71	26.49	26.49	26.49	80.6	81.2	80.8	5.36	5.40	5.37	4.40	4.38	4.42	4	4.50
	20:56		Middle	4.0	27.90	27.90	27.85	7.72	7.72	7.71	26.48	26.48	26.49	80.9	80.3	80.8	5.38	5.35	5.37	4.42	4.48	4.42	5	4.50
13/7/2017	7:50	Fine	Middle	4.0	28.70	28.70	28.90	7.97	7.97	8.05	24.61	24.61	24.62	95.3	94.5	94.6	6.41	6.35	6.35	3.22	3.22	3.16	3	3.00
	7:52		Middle	4.0	29.10	29.10	28.90	8.12	8.12	8.05	24.62	24.62	24.62	94.3	94.1	94.6	6.33	6.31	6.35	3.09	3.10	3.16	3	3.00
15/7/2017	9:30	Fine	Middle	4.0	27.90	27.90	28.00	8.18	8.18	8.23	24.89	24.89	24.90	92.3	91.9	91.6	6.28	6.26	6.24	3.64	3.65	3.75	4	3.00
	9:32		Middle	4.0	28.10	28.10	28.00	8.27	8.27	8.23	24.90	24.90	24.90	91.5	90.8	91.6	6.22	6.18	6.24	3.84	3.85	3.75	2	3.00
18/7/2017	-	Amber Rainstorm Warning Signal	Middle	-	-	-	-	-	-	-	-	-	-	-	-	-	-	-	-	-	-	-	-	
	-		Middle	-	-	-	-	-	-	-	-	-	-	-	-	-	-	-	-	-	-	-	-	-
20/7/2017	15:15	Fine	Middle	4.5	28.10	28.10	28.20	6.89	6.89	6.94	23.77	23.77	23.77	88.7	89.8	89.9	6.06	6.13	6.13	1.83	1.81	1.89	11	10.00
	15:17		Middle	4.5	28.30	28.30	28.20	6.99	6.99	6.94	23.76	23.76	23.77	90.5	90.6	89.9	6.15	6.16	6.13	1.93	1.97	1.89	9	10.00
22/7/2017	18:57	Fine	Middle	3.5	28.10	28.10	28.20	7.81	7.81	7.83	25.44	25.44	25.44	79.2	79.5	79.9	5.37	5.39	5.41	5.26	5.03	5.07	3	4.00
	18:58		Middle	3.5	28.30	28.30	28.20	7.86	7.85	7.83	25.44	25.44	25.44	80.3	80.5	79.9	5.43	5.44	5.41	5.00	4.98	5.07	5	4.00
24/7/2017	18:42	Cloudy	Middle	3.5	27.60	27.60	27.60	7.78	7.78	7.77	26.06	26.06	26.06	73.4	73.2	72.8	5.00	4.90	4.94	4.44	4.43	4.45	5	4.50
	18:43		Middle	3.5	27.60	27.60	27.60	7.75	7.75	7.77	26.06	26.06	26.06	71.2	73.3	72.8	4.85	4.99	4.94	4.48	4.45	4.45	4	4.50
26/7/2017	5:12	Cloudy	Middle	3.5	27.60	27.60	27.60	7.95	7.95	7.94	26.52	26.52	26.52	71.2	71.0	70.9	4.84	4.82	4.82	2.44	2.42	2.39	2	2.00
	5:13		Middle	3.5	27.60	27.60	27.60	7.93	7.93	7.94	26.53	26.52	26.52	70.1	71.2	70.9	4.77	4.84	4.82	2.40	2.29	2.39	<2	2.00

Remarks:  
 Single underline denotes exceedance over Action Level.  
 Double underline denotes exceedance over Limit Level.  
 With respect to site closure and suspension of construction activities at Wanchai area, the Water Quality Monitoring Event at WQM stations WSD19, P1, P3, P4, P5 and C1 was temporary suspended from 27 June 2017 to 01 July 2017.





**Water Monitoring Result at C7 - Windsor House  
Mid-Ebb Tide**

Date	Time	Weather Condition	Sampling Depth		Water Temperature		pH			Salinity		DO Saturation		DO		Turbidity		Suspended Solids						
					°C		-			ppt		%		mg/L		NTU		mg/L						
					Value	Average	Value	Average	Value	Average	Value	Average	Value	Average	Value	Average	Value	Average	Value	Average				
28/6/2017	16:10	Fine	Middle	-	28.70	28.70	29.05	8.01	8.01	8.01	27.15	27.15	27.17	85.2	85.7	85.3	5.64	5.67	5.64	4.12	4.09	4.10	3	2.50
	16:12		Middle	-	29.40	29.40		8.01	8.01		27.19	27.19		85.7	84.5		5.67	5.59		4.10	4.10		2	
30/6/2017	17:55	Fine	Middle	-	27.90	27.90	28.05	8.09	8.09	8.10	28.66	28.66	28.66	91.1	90.5	89.9	6.08	6.04	5.99	3.37	3.35	3.29	3	3.00
	17:57		Middle	-	28.20	28.20		8.10	8.10		28.66	28.66		88.7	89.2		5.91	5.94		3.22	3.21		3	
3/7/2017	8:35	Cloudy	Middle	-	27.70	27.70	27.75	8.11	8.11	8.11	24.97	24.97	24.97	82.3	82.7	82.8	5.64	5.68	5.68	4.06	4.00	4.01	3	3.50
	8:37		Middle	-	27.80	27.80		8.11	8.11		24.96	24.96		83.7	82.4		5.73	5.65		3.97	3.99		4	
6/7/2017	10:40	Cloudy	Middle	-	25.90	25.90	25.95	7.98	7.98	7.99	24.19	24.19	24.19	82.5	82.9	83.8	5.74	5.77	5.74	5.06	5.00	5.00	3	3.00
	10:42		Middle	-	26.00	26.00		8.00	8.00		24.19	24.19		82.3	87.3		5.73	5.72		4.95	4.99		3	
8/7/2017	9:35	Cloudy	Middle	-	27.00	27.00	27.05	8.07	8.07	8.06	24.70	24.70	24.70	76.7	76.9	76.6	5.32	5.33	5.31	5.27	5.19	5.10	3	3.50
	9:37		Middle	-	27.10	27.10		8.05	8.05		24.69	24.69		76.4	76.3		5.29	5.28		5.00	4.95		4	
10/7/2017	11:25	Fine	Middle	-	28.30	28.30	28.45	8.10	8.10	8.09	26.83	26.83	26.83	80.9	81.1	81.1	5.41	5.42	5.42	5.94	5.93	5.95	2	2.50
	11:27		Middle	-	28.60	28.60		8.07	8.07		26.83	26.83		80.8	81.4		5.40	5.44		5.93	5.99		3	
13/7/2017	16:00	Fine	Middle	-	29.20	29.20	29.30	8.36	8.36	8.37	25.04	25.04	25.04	95.0	95.4	95.1	6.33	6.35	6.33	2.92	2.99	2.95	7	6.00
	16:02		Middle	-	29.40	29.40		8.37	8.37		25.03	25.03		95.2	94.8		6.34	6.31		2.99	2.89		5	
15/7/2017	15:40	Cloudy	Middle	-	28.10	28.10	28.10	8.19	8.19	8.20	25.23	25.23	25.23	83.4	82.1	81.4	6.66	6.58	6.03	3.60	3.61	3.62	3	3.00
	15:42		Middle	-	28.10	28.10		8.20	8.20		25.22	25.22		80.0	80.1		5.44	5.44		3.63	3.64		3	
18/7/2017	-	Amber Rainstorm Warning Signal	Middle	-	-	-	-	-	-	-	-	-	-	-	-	-	-	-	-	-	-	-	-	-
	-		Middle	-	-	-	-	-	-	-	-	-	-	-	-	-	-	-	-	-	-	-	-	-
20/7/2017	8:00	Fine	Middle	-	28.30	28.30	28.30	6.85	6.85	6.87	23.10	23.10	23.10	80.2	80.8	80.4	5.49	5.53	5.50	0.55	0.60	0.43	5	4.00
	8:02		Middle	-	28.30	28.30		6.89	6.89		23.10	23.10		80.1	80.5		5.48	5.50		0.28	0.30		3	
22/7/2017	11:58	Fine	Middle	-	28.70	28.70	28.80	7.97	7.97	7.97	24.90	24.90	24.89	63.2	63.0	62.0	4.26	4.24	4.17	1.01	1.01	1.01	5	4.50
	12:00		Middle	-	28.90	28.90		7.96	7.96		24.88	24.88		61.3	60.3		4.12	4.06		1.00	1.00		4	
24/7/2017	12:15	Cloudy	Middle	-	28.30	28.30	28.35	7.97	7.99	7.98	26.38	26.38	26.38	107.1	107.1	106.0	7.20	7.20	7.13	2.77	2.76	2.77	4	3.50
	12:17		Middle	-	28.40	28.40		7.98	7.98		26.38	26.38		104.9	105.0		7.05	7.06		2.77	2.78		3	
26/7/2017	15:32	Fine	Middle	-	29.90	29.90	29.95	8.06	8.06	8.07	26.44	26.44	26.44	87.6	88.3	88.2	5.77	5.77	5.78	0.90	0.89	0.88	3	3.50
	15:34		Middle	-	30.00	30.00		8.07	8.07		26.43	26.43		88.3	88.6		5.77	5.79		0.89	0.85		4	

Remarks:  
Single underline denotes exceedance over Action Level.  
Double underline denotes exceedance over Limit Level.



**Water Monitoring Result at C1 - HKCEC  
Mid-Ebb Tide**

Date	Time	Weather Condition	Sampling Depth		Water Temperature			pH		Salinity		DO Saturation		DO		Turbidity		Suspended Solids						
					°C			-		ppt		%		mg/L		NTU		mg/L						
					Value	Average		Value	Average	Value	Average	Value	Average	Value	Average	Value	Average	Value	Average					
28/6/2017	-	-	Middle	-	-	-	-	-	-	-	-	-	-	-	-	-	-	-	-	-				
	-		Middle	-	-	-	-	-	-	-	-	-	-	-	-	-	-	-	-	-				
30/6/2017	-	-	Middle	-	-	-	-	-	-	-	-	-	-	-	-	-	-	-	-	-				
	-		Middle	-	-	-	-	-	-	-	-	-	-	-	-	-	-	-	-	-				
3/7/2017	11:05	Cloudy	Middle	2.5	27.60	27.60	27.70	8.10	8.10	8.12	22.72	22.72	22.72	89.1	89.1	88.7	6.17	6.17	6.14	4.19	4.22	4.22	3	2.50
	11:07		Middle	2.5	27.80	27.80	27.70	8.13	8.13	8.12	22.71	22.71	22.72	88.3	88.1	88.7	6.12	6.10	6.14	4.22	4.23	4.22	2	2.50
6/7/2017	12:40	Cloudy	Middle	2.5	27.40	27.40	27.40	8.36	8.36	8.37	21.77	21.77	21.52	91.5	91.1	91.2	6.42	6.41	6.40	3.17	3.12	3.18	11	10.50
	12:42		Middle	2.5	27.40	27.40	27.40	8.37	8.37	8.37	21.27	21.27	21.52	91.5	90.5	91.2	6.43	6.35	6.40	3.11	3.30	3.18	10	10.50
8/7/2017	10:50	Cloudy	Middle	2.5	26.70	26.70	26.75	8.22	8.22	8.22	24.14	24.14	24.14	86.5	86.7	86.7	6.04	6.06	6.06	5.43	5.30	5.40	5	4.50
	10:52		Middle	2.5	26.80	26.80	26.75	8.21	8.21	8.22	24.14	24.14	24.14	87.0	86.7	86.7	6.08	6.06	6.06	5.28	5.60	5.40	4	4.50
10/7/2017	14:25	Fine	Middle	3.0	28.30	28.30	28.40	8.32	8.32	8.33	25.39	25.39	25.37	89.2	90.4	89.4	6.03	6.10	6.03	5.45	5.47	5.46	5	4.50
	14:27		Middle	3.0	28.50	28.50	28.40	8.33	8.33	8.33	25.31	25.39	25.37	88.8	89.0	89.4	5.99	6.01	6.03	5.47	5.46	5.46	4	4.50
13/7/2017	15:18	Fine	Middle	3.0	28.80	28.80	28.85	8.57	8.57	8.57	23.81	23.81	23.81	93.5	93.1	93.2	6.32	6.29	6.30	2.67	2.62	2.47	4	5.00
	15:20		Middle	3.0	28.90	28.90	28.85	8.56	8.56	8.57	23.81	23.81	23.81	92.8	93.3	93.2	6.27	6.30	6.30	2.48	2.12	2.47	6	5.00
15/7/2017	15:20	Cloudy	Middle	2.5	27.80	27.80	27.80	8.44	8.44	8.43	26.32	26.32	26.32	92.6	92.6	92.3	6.29	6.28	6.27	1.97	1.89	1.78	5	4.50
	15:22		Middle	2.5	27.80	27.80	27.80	8.42	8.43	8.43	26.32	26.32	26.32	92.7	91.4	92.3	6.29	6.20	6.27	1.66	1.60	1.78	4	4.50
18/7/2017	-	Amber Rainstorm Warning Signal	Middle	-	-	-	-	-	-	-	-	-	-	-	-	-	-	-	-	-	-	-	-	
	-		Middle	-	-	-	-	-	-	-	-	-	-	-	-	-	-	-	-	-	-	-	-	-
20/7/2017	11:00	Fine	Middle	2.0	28.20	28.20	28.25	8.13	8.13	8.14	23.02	23.02	23.02	72.1	71.7	72.2	4.95	4.92	4.95	1.46	1.37	1.34	5	4.50
	11:01		Middle	2.0	28.30	28.30	28.25	8.14	8.14	8.14	23.02	23.02	23.02	72.8	72.0	72.2	4.99	4.93	4.95	1.28	1.25	1.34	4	4.50
22/7/2017	14:14	Fine	Middle	3.0	28.70	28.70	28.90	8.35	8.35	8.35	24.42	24.42	24.41	92.2	90.9	92.7	6.21	6.12	6.24	0.18	0.17	0.16	5	6.00
	14:16		Middle	3.0	29.10	29.10	28.90	8.35	8.35	8.35	24.40	24.40	24.41	93.8	93.9	92.7	6.31	6.31	6.24	0.18	0.11	0.16	7	6.00
24/7/2017	15:30	Cloudy	Middle	2.5	28.00	28.00	28.05	8.17	8.17	8.17	25.63	25.63	25.63	91.7	91.3	91.7	6.22	6.19	6.22	1.99	1.99	2.00	6	5.00
	15:32		Middle	2.5	28.10	28.10	28.05	8.17	8.17	8.17	25.62	25.62	25.63	91.8	91.9	91.7	6.23	6.23	6.22	1.98	2.03	2.00	4	5.00
26/7/2017	15:00	Fine	Middle	3.0	28.60	28.60	28.65	8.07	8.07	8.08	26.26	26.26	26.26	92.0	91.8	91.9	6.16	6.15	6.16	1.42	1.42	1.41	5	5.00
	15:02		Middle	3.0	28.70	28.70	28.65	8.08	8.08	8.08	26.25	26.25	26.26	90.9	92.8	91.9	6.10	6.21	6.16	1.41	1.39	1.41	5	5.00

Remarks:  
 Single underline denotes exceedance over Action Level.  
 Double underline denotes exceedance over Limit Level.  
 With respect to site closure and suspension of construction activities at Wanchai area, the Water Quality Monitoring Event at WQM stations WSD19, P1, P3, P4, P5 and C1 was temporary suspended from 27 June 2017 to 01 July 2017.



**Water Monitoring Result at P1 - HKCEC Phase I  
Mid-Ebb Tide**

Date	Time	Weather Condition	Sampling Depth		Water Temperature				pH		Salinity		DO Saturation		DO		Turbidity		Suspended Solids					
					°C				-		ppt		%		mg/L		NTU		mg/L					
					Value	Average	Value	Average	Value	Average	Value	Average	Value	Average	Value	Average	Value	Average	Value	Average				
28/6/2017	-	-	Middle	-	-	-	-	-	-	-	-	-	-	-	-	-	-	-	-	-	-			
	-		Middle	-	-	-	-	-	-	-	-	-	-	-	-	-	-	-	-	-	-			
30/6/2017	-	-	Middle	-	-	-	-	-	-	-	-	-	-	-	-	-	-	-	-	-	-			
	-		Middle	-	-	-	-	-	-	-	-	-	-	-	-	-	-	-	-	-	-			
3/7/2017	10:45	Cloudy	Middle	2.5	27.40	27.40	27.40	8.17	8.17	8.18	22.72	22.72	22.72	89.5	90.0	89.7	6.26	6.27	6.27	3.03	3.07	3.05	3	2.50
	10:47		Middle	2.5	27.40	27.40	27.40	8.19	8.19	8.18	22.72	22.72	22.72	89.6	89.8	89.7	6.26	6.27	6.27	3.01	3.07	3.05	2	2.50
6/7/2017	12:20	Cloudy	Middle	2.5	28.00	28.00	28.00	8.18	8.18	8.22	21.36	21.36	21.36	94.4	94.1	93.9	6.56	6.54	6.53	4.17	4.04	4.03	5	5.50
	12:22		Middle	2.5	28.00	28.00	28.00	8.25	8.25	8.22	21.36	21.36	21.36	93.4	93.7	93.9	6.49	6.51	6.53	4.00	3.89	4.03	6	5.50
8/7/2017	10:30	Cloudy	Middle	2.5	27.00	27.00	27.20	7.99	7.99	8.03	24.28	24.28	24.28	88.6	88.6	88.1	6.13	6.13	6.09	5.15	5.25	5.24	4	3.50
	10:32		Middle	2.5	27.40	27.40	27.20	8.07	8.07	8.03	24.28	24.28	24.28	87.9	87.1	88.1	6.08	6.02	6.09	5.27	5.28	5.24	3	3.50
10/7/2017	14:45	Fine	Middle	3.0	29.40	29.40	29.60	8.19	8.19	8.23	25.28	25.28	25.28	102.1	102.0	102.1	6.78	6.77	6.78	6.33	6.22	6.23	4	4.50
	14:47		Middle	3.0	29.80	29.80	29.60	8.27	8.27	8.23	25.27	25.27	25.28	102.0	102.2	102.1	6.77	6.79	6.78	6.19	6.16	6.23	5	4.50
13/7/2017	14:55	Fine	Middle	3.0	29.40	29.40	29.55	8.36	8.36	8.43	23.67	23.67	23.68	103.6	104.2	104.5	6.92	6.95	6.63	2.74	2.73	2.74	4	4.00
	14:57		Middle	3.0	29.70	29.70	29.55	8.50	8.50	8.43	23.69	23.69	23.68	105.2	105.1	104.5	6.34	6.32	6.63	2.77	2.72	2.74	4	4.00
15/7/2017	15:00	Cloudy	Middle	2.5	27.60	27.60	27.65	8.30	8.30	8.34	26.07	26.07	26.08	99.1	98.4	97.7	6.75	6.70	6.65	2.21	2.20	2.18	4	3.50
	15:02		Middle	2.5	27.70	27.70	27.65	8.38	8.38	8.34	26.08	26.08	26.08	97.0	96.3	97.7	6.61	6.55	6.65	2.15	2.17	2.18	3	3.50
18/7/2017	-	Amber Rainstorm Warning Signal	Middle	-	-	-	-	-	-	-	-	-	-	-	-	-	-	-	-	-	-	-	-	
	-		Middle	-	-	-	-	-	-	-	-	-	-	-	-	-	-	-	-	-	-	-	-	-
20/7/2017	10:34	Fine	Middle	2.0	28.10	28.10	28.05	7.14	7.14	7.56	23.15	23.15	23.17	72.6	71.9	73.2	4.98	4.94	5.02	1.28	1.08	1.08	4	4.50
	10:36		Middle	2.0	28.00	28.00	28.05	7.97	7.97	7.56	23.18	23.19	23.17	74.8	73.4	73.2	5.13	5.02	5.02	0.73	1.21	1.08	5	4.50
22/7/2017	13:54	Fine	Middle	3.0	29.00	29.00	29.35	8.36	8.36	8.36	24.39	24.39	24.34	95.5	97.3	95.6	6.37	6.49	6.38	0.94	0.98	0.97	7	6.50
	13:56		Middle	3.0	29.70	29.70	29.35	8.35	8.35	8.36	24.29	24.29	24.34	96.6	93.0	95.6	6.44	6.20	6.38	0.98	0.99	0.97	6	6.50
24/7/2017	15:10	Cloudy	Middle	2.5	28.50	28.50	28.55	8.03	8.03	8.05	25.78	25.78	25.78	109.1	109.4	108.7	7.33	7.35	7.30	1.85	1.49	1.53	4	5.00
	15:12		Middle	2.5	28.60	28.60	28.55	8.07	8.07	8.05	25.78	25.78	25.78	108.1	108.2	108.7	7.26	7.27	7.30	1.39	1.39	1.53	6	5.00
26/7/2017	14:40	Fine	Middle	3.0	30.30	30.30	30.40	7.89	7.89	7.93	26.34	26.34	26.35	115.0	113.9	113.5	7.49	7.41	7.38	1.56	1.51	1.53	6	5.50
	14:42		Middle	3.0	30.50	30.50	30.40	7.96	7.96	7.93	26.35	26.35	26.35	113.1	111.8	113.5	7.35	7.27	7.38	1.47	1.56	1.53	5	5.50

Remarks:  
 Single underline denotes exceedance over Action Level.  
 Double underline denotes exceedance over Limit Level.  
 With respect to site closure and suspension of construction activities at Wanchai area, the Water Quality Monitoring Event at WQM stations WSD19, P1, P3, P4, P5 and C1 was temporary suspended from 27 June 2017 to 01 July 2017.



**Water Monitoring Result at P3 - APA  
Mid-Ebb Tide**

Date	Time	Weather Condition	Sampling Depth		Water Temperature				pH		Salinity		DO Saturation		DO		Turbidity		Suspended Solids					
					°C				-		ppt		%		mg/L		NTU		mg/L					
					Value	Average	Value	Average	Value	Average	Value	Average	Value	Average	Value	Average	Value	Average	Value	Average				
28/6/2017	-	-	Middle	-	-	-	-	-	-	-	-	-	-	-	-	-	-	-	-	-	-			
	-		Middle	-	-	-	-	-	-	-	-	-	-	-	-	-	-	-	-	-	-			
30/6/2017	-	-	Middle	-	-	-	-	-	-	-	-	-	-	-	-	-	-	-	-	-	-			
	-		Middle	-	-	-	-	-	-	-	-	-	-	-	-	-	-	-	-	-	-			
3/7/2017	10:50	Cloudy	Middle	2.5	27.30	27.30	27.30	8.21	8.21	8.22	22.61	22.61	22.61	87.1	88.4	88.6	6.08	6.18	6.19	3.85	4.02	3.94	3	3.00
	10:52		Middle	2.5	27.30	27.30	27.30	8.22	8.22	8.22	22.60	22.60	22.61	89.4	89.3	88.6	6.24	6.24	6.19	3.90	3.99	3.94	3	3.00
6/7/2017	12:25	Cloudy	Middle	2.5	27.70	27.70	27.70	8.29	8.29	8.31	21.20	21.20	21.20	92.1	90.7	92.0	6.44	6.37	6.44	3.16	3.09	3.11	4	5.00
	12:27		Middle	2.5	27.70	27.70	27.70	8.32	8.32	8.31	21.20	21.20	21.20	92.6	92.7	92.0	6.46	6.49	6.44	3.09	3.08	3.11	6	5.00
8/7/2017	10:35	Cloudy	Middle	2.5	26.80	26.80	26.90	8.10	8.10	8.10	24.25	24.25	24.25	86.1	85.6	85.7	6.00	5.95	5.96	5.80	5.79	5.79	4	3.50
	10:37		Middle	2.5	27.00	27.00	26.90	8.10	8.10	8.10	24.25	24.25	24.25	85.7	85.2	85.7	5.95	5.92	5.96	5.79	5.77	5.79	3	3.50
10/7/2017	14:10	Fine	Middle	3.0	28.50	28.50	28.60	8.29	8.29	8.30	25.24	25.24	25.24	101.2	101.1	100.8	6.81	6.80	6.79	5.72	5.72	5.74	6	5.00
	14:12		Middle	3.0	28.70	28.70	28.60	8.31	8.31	8.30	25.24	25.24	25.24	100.7	100.3	100.8	6.78	6.75	6.79	5.72	5.78	5.74	4	5.00
13/7/2017	15:00	Fine	Middle	3.0	29.40	29.40	29.50	8.55	8.55	8.56	23.73	23.73	23.73	100.3	101.0	99.2	6.73	6.79	6.65	2.74	2.73	2.67	4	4.00
	15:02		Middle	3.0	29.60	29.60	29.50	8.56	8.56	8.56	23.73	23.73	23.73	98.5	97.1	99.2	6.58	6.48	6.65	2.61	2.60	2.67	4	4.00
15/7/2017	15:05	Cloudy	Middle	2.5	27.60	27.60	27.60	8.41	8.41	8.43	26.07	26.07	26.09	98.8	99.4	98.6	6.74	6.78	6.73	1.62	1.89	1.61	3	2.50
	15:07		Middle	2.5	27.60	27.60	27.60	8.44	8.44	8.43	26.11	26.11	26.09	98.0	98.3	98.6	6.68	6.70	6.73	1.44	1.50	1.61	2	2.50
18/7/2017	-	Amber Rainstorm Warning Signal	Middle	-	-	-	-	-	-	-	-	-	-	-	-	-	-	-	-	-	-	-	-	
	-		Middle	-	-	-	-	-	-	-	-	-	-	-	-	-	-	-	-	-	-	-	-	-
20/7/2017	10:42	Fine	Middle	2.0	27.60	27.60	27.70	8.06	8.06	8.07	23.20	23.20	23.21	79.7	79.7	77.9	5.51	5.48	5.37	0.70	0.68	0.76	6	5.00
	10:43		Middle	2.0	27.80	27.80	27.70	8.08	8.08	8.07	23.21	23.21	23.21	76.7	75.3	77.9	5.30	5.20	5.37	0.84	0.83	0.76	4	5.00
22/7/2017	14:00	Fine	Middle	3.0	29.00	29.00	29.35	8.34	8.34	8.32	11.96	11.96	11.96	97.9	95.2	94.5	7.00	6.81	6.75	1.30	1.19	1.24	16	15.50
	14:02		Middle	3.0	29.70	29.70	29.35	8.30	8.30	8.32	11.96	11.96	11.96	91.1	93.8	94.5	6.50	6.69	6.75	1.23	1.24	1.24	15	15.50
24/7/2017	15:15	Cloudy	Middle	2.5	28.10	28.10	28.15	8.10	8.10	8.11	25.76	25.70	25.71	104.3	104.1	103.9	7.06	7.05	7.03	1.40	1.36	1.46	4	5.00
	15:17		Middle	2.5	28.20	28.20	28.15	8.11	8.11	8.11	25.69	25.69	25.71	103.7	103.4	103.9	7.02	7.00	7.03	1.37	1.72	1.46	6	5.00
26/7/2017	14:45	Fine	Middle	3.0	29.00	29.00	29.15	7.99	7.99	7.99	26.23	26.23	26.23	115.4	114.4	114.7	7.66	7.59	7.61	1.48	1.26	1.31	5	5.00
	14:47		Middle	3.0	29.30	29.30	29.15	7.99	7.99	7.99	26.23	26.23	26.23	114.2	114.8	114.7	7.57	7.61	7.61	1.25	1.23	1.31	5	5.00

Remarks:  
 Single underline denotes exceedance over Action Level.  
 Double underline denotes exceedance over Limit Level.  
 With respect to site closure and suspension of construction activities at Wanchai area, the Water Quality Monitoring Event at WQM stations WSD19, P1, P3, P4, P5 and C1 was temporary suspended from 27 June 2017 to 01 July 2017.



**Water Monitoring Result at P4 - SOC  
Mid-Ebb Tide**

Date	Time	Weather Condition	Sampling Depth		Water Temperature				pH		Salinity		DO Saturation		DO		Turbidity		Suspended Solids					
					°C				-		ppt		%		mg/L		NTU		mg/L					
					Value	Average	Value	Average	Value	Average	Value	Average	Value	Average	Value	Average	Value	Average	Value	Average				
28/6/2017	-	-	Middle	-	-	-	-	-	-	-	-	-	-	-	-	-	-	-	-	-	-			
	-		Middle	-	-	-	-	-	-	-	-	-	-	-	-	-	-	-	-	-	-			
30/6/2017	-	-	Middle	-	-	-	-	-	-	-	-	-	-	-	-	-	-	-	-	-	-			
	-		Middle	-	-	-	-	-	-	-	-	-	-	-	-	-	-	-	-	-	-			
3/7/2017	10:55	Cloudy	Middle	2.5	27.20	27.20	27.20	8.23	8.23	8.23	22.53	22.53	22.53	89.2	89.2	88.9	6.24	6.24	6.22	2.74	2.75	2.76	3	3.00
	10:57		Middle	2.5	27.20	27.20	27.20	8.23	8.23	8.23	22.53	22.53	22.53	88.8	88.3	88.9	6.21	6.17	6.22	2.79	2.77	2.76	3	3.00
6/7/2017	12:30	Cloudy	Middle	2.5	27.60	27.60	27.55	8.33	8.33	8.34	21.07	21.07	21.08	90.1	90.1	89.5	6.32	6.32	6.28	3.44	3.43	3.46	5	4.50
	12:32		Middle	2.5	27.50	27.50	27.55	8.35	8.35	8.34	21.08	21.08	21.08	88.4	89.2	89.5	6.20	6.27	6.28	3.42	3.53	3.46	4	4.50
8/7/2017	10:40	Cloudy	Middle	2.5	26.90	26.90	26.90	8.18	8.18	8.20	23.71	23.71	23.71	88.6	88.1	88.4	6.19	6.15	6.16	4.95	4.90	4.93	3	3.50
	10:42		Middle	2.5	26.90	26.90	26.90	8.21	8.21	8.20	23.71	23.71	23.71	88.5	88.2	88.4	6.19	6.12	6.16	4.94	4.93	4.93	4	3.50
10/7/2017	14:15	Fine	Middle	3.0	28.50	28.50	28.50	8.32	8.32	8.33	25.20	25.20	25.20	100.4	100.4	100.2	6.78	6.78	6.77	5.66	5.65	5.70	5	5.50
	14:17		Middle	3.0	28.50	28.50	28.50	8.33	8.33	8.33	25.19	25.19	25.20	99.8	100.3	100.2	6.73	6.77	6.77	5.72	5.75	5.70	6	5.50
13/7/2017	15:05	Fine	Middle	3.0	28.90	28.90	28.90	8.58	8.58	8.58	23.39	23.39	23.39	110.2	109.1	106.3	7.44	7.37	7.08	2.88	2.61	2.74	4	3.50
	15:07		Middle	3.0	28.90	28.90	28.90	8.58	8.58	8.58	23.39	23.39	23.39	105.3	100.5	106.3	7.11	6.38	7.08	2.73	2.72	2.74	3	3.50
15/7/2017	15:10	Cloudy	Middle	2.5	27.50	27.50	27.50	8.45	8.45	8.46	26.14	26.14	26.14	93.9	94.0	93.7	6.41	6.42	6.40	1.22	1.22	1.23	6	5.00
	15:12		Middle	2.5	27.50	27.50	27.50	8.46	8.46	8.46	26.14	26.14	26.14	93.6	93.3	93.7	6.38	6.37	6.40	1.24	1.24	1.23	4	5.00
18/7/2017	-	Amber Rainstorm Warning Signal	Middle	-	-	-	-	-	-	-	-	-	-	-	-	-	-	-	-	-	-	-	-	
	-		Middle	-	-	-	-	-	-	-	-	-	-	-	-	-	-	-	-	-	-	-	-	
20/7/2017	10:49	Fine	Middle	2.5	27.60	27.60	27.70	8.11	8.11	8.12	23.19	23.19	23.20	83.5	82.9	81.6	5.77	5.72	5.63	1.82	1.73	1.52	4	4.00
	10:51		Middle	2.5	27.80	27.80	27.70	8.13	8.13	8.12	23.20	23.21	23.20	80.0	79.8	81.6	5.51	5.50	5.63	1.23	1.30	1.52	4	4.00
22/7/2017	14:05	Fine	Middle	3.0	28.60	28.60	28.85	8.33	8.33	8.33	24.50	24.50	24.48	91.8	92.1	92.2	6.19	6.20	7.71	0.72	0.71	0.72	7	6.00
	14:07		Middle	3.0	29.10	29.10	28.85	8.33	8.33	8.33	24.46	24.46	24.48	92.6	92.3	92.2	9.23	9.20	7.71	0.71	0.75	0.72	5	6.00
24/7/2017	15:20	Cloudy	Middle	2.5	28.00	28.00	28.05	8.13	8.13	8.15	25.59	25.59	25.59	104.1	103.1	103.1	7.06	6.99	6.99	1.28	1.31	1.32	3	4.00
	15:22		Middle	2.5	28.10	28.10	28.05	8.16	8.16	8.15	25.59	25.59	25.59	102.9	102.2	103.1	6.98	6.93	6.99	1.32	1.36	1.32	5	4.00
26/7/2017	14:50	Fine	Middle	3.0	28.80	28.80	28.90	8.04	8.04	8.05	26.28	26.28	26.28	106.0	105.3	105.2	7.07	7.01	7.01	1.41	1.42	1.43	6	6.50
	14:52		Middle	3.0	29.00	29.00	28.90	8.06	8.06	8.05	26.28	26.28	26.28	104.9	104.5	105.2	6.99	6.96	7.01	1.44	1.43	1.43	7	6.50

Remarks:

Single underline denotes exceedance over Action Level.  
Double underline denotes exceedance over Limit Level.

With respect to site closure and suspension of construction activities at Wanchai area, the Water Quality Monitoring Event at WQM stations WSD19, P1, P3, P4, P5 and C1 was temporary suspended from 27 June 2017 to 01 July 2017.



**Water Monitoring Result at P5 - WCT / RT / IT  
Mid-Ebb Tide**

Date	Time	Weather Condition	Sampling Depth		Water Temperature			pH		Salinity		DO Saturation		DO		Turbidity		Suspended Solids						
					°C			-		ppt		%		mg/L		NTU		mg/L						
					Value	Average		Value	Average	Value	Average	Value	Average	Value	Average	Value	Average	Value	Average					
28/6/2017	-	-	Middle	-	-	-	-	-	-	-	-	-	-	-	-	-	-	-	-	-				
	-		Middle	-	-	-	-	-	-	-	-	-	-	-	-	-	-	-	-	-				
30/6/2017	-	-	Middle	-	-	-	-	-	-	-	-	-	-	-	-	-	-	-	-	-				
	-		Middle	-	-	-	-	-	-	-	-	-	-	-	-	-	-	-	-	-				
3/7/2017	11:00	Cloudy	Middle	2.5	27.30	27.30	27.30	8.23	8.23	8.23	22.52	22.52	22.52	88.0	88.1	87.9	6.15	6.16	6.14	2.80	2.83	2.83	4	5.00
	11:02		Middle	2.5	27.30	27.30	27.30	8.23	8.23	8.23	22.51	22.51	22.52	87.9	87.5	87.9	6.14	6.11	6.14	2.84	2.85	2.83	6	5.00
6/7/2017	12:35	Cloudy	Middle	2.5	27.50	27.50	27.50	8.35	8.35	8.36	21.13	31.13	23.64	87.9	87.9	87.9	6.17	6.17	6.17	2.65	2.69	2.64	5	5.00
	12:37		Middle	2.5	27.50	27.50	27.50	8.36	8.36	8.36	21.14	21.14	23.64	88.0	87.7	87.9	6.18	6.16	6.17	2.62	2.60	2.64	5	5.00
8/7/2017	10:45	Cloudy	Middle	2.5	26.80	26.80	26.85	8.21	8.21	8.22	23.71	23.71	23.72	88.0	88.0	88.3	6.16	6.15	6.18	5.02	5.00	4.89	4	3.50
	10:47		Middle	2.5	26.90	26.90	26.85	8.22	8.22	8.22	23.73	23.73	23.72	88.7	88.6	88.3	6.20	6.20	6.18	4.77	4.76	4.89	3	3.50
10/7/2017	14:20	Fine	Middle	3.0	28.30	28.30	28.35	8.33	8.33	8.33	25.37	25.37	25.37	69.9	67.8	71.8	4.72	4.58	4.84	5.58	5.59	5.59	8	7.00
	14:22		Middle	3.0	28.40	28.40	28.35	8.33	8.33	8.33	25.36	25.36	25.37	76.2	73.4	71.8	5.14	4.93	4.84	5.60	5.60	5.59	6	7.00
13/7/2017	15:10	Fine	Middle	3.0	29.20	29.20	29.20	8.58	8.58	8.58	23.57	23.57	23.57	90.3	92.0	90.4	6.08	6.19	6.09	2.88	2.94	2.71	5	4.50
	15:12		Middle	3.0	29.20	29.20	29.20	8.57	8.57	8.58	23.57	23.57	23.57	88.1	91.2	90.4	5.93	6.14	6.09	2.48	2.53	2.71	4	4.50
15/7/2017	15:15	Cloudy	Middle	2.5	27.50	27.50	27.50	8.46	8.46	8.46	26.22	26.22	26.22	92.2	92.2	92.2	6.29	6.29	6.29	1.47	1.37	1.35	2	2.50
	15:17		Middle	2.5	27.50	27.50	27.50	8.45	8.45	8.46	26.22	26.22	26.22	92.4	91.8	92.2	6.30	6.27	6.29	1.25	1.29	1.35	3	2.50
18/7/2017	-	Amber Rainstorm Warning Signal	Middle	-	-	-	-	-	-	-	-	-	-	-	-	-	-	-	-	-	-	-	-	-
	-		Middle	-	-	-	-	-	-	-	-	-	-	-	-	-	-	-	-	-	-	-	-	-
20/7/2017	10:56	Fine	Middle	2.0	27.50	27.50	27.60	8.13	8.13	8.13	23.66	23.66	23.67	74.4	74.2	72.7	5.14	5.12	5.02	1.12	1.14	1.09	5	5.50
	10:57		Middle	2.0	27.70	27.70	27.60	8.13	8.13	8.13	23.67	23.67	23.67	71.1	71.2	72.7	4.90	4.93	5.02	1.02	1.06	1.09	6	5.50
22/7/2017	14:09	Fine	Middle	3.0	28.70	28.70	28.95	8.32	8.32	8.32	24.49	24.49	24.51	88.2	89.4	88.6	5.92	6.01	5.95	0.59	0.59	0.58	7	6.50
	14:11		Middle	3.0	29.20	29.20	28.95	8.32	8.32	8.32	24.53	24.53	24.51	88.2	88.7	88.6	5.92	5.94	5.95	0.58	0.56	0.58	6	6.50
24/7/2017	15:25	Cloudy	Middle	2.5	28.00	28.00	28.05	8.16	8.16	8.17	25.63	25.63	25.63	97.6	98.1	97.4	6.62	6.65	6.60	1.07	1.13	1.14	4	4.00
	15:27		Middle	2.5	28.10	28.10	28.05	8.17	8.17	8.17	25.63	25.63	25.63	96.9	96.9	97.4	6.57	6.57	6.60	1.16	1.18	1.14	4	4.00
26/7/2017	14:55	Fine	Middle	3.0	28.70	28.70	28.75	8.05	8.05	8.06	26.23	26.23	26.23	100.6	100.6	100.0	6.72	6.72	6.68	1.40	1.41	1.38	3	3.50
	14:57		Middle	3.0	28.80	28.80	28.75	8.07	8.07	8.06	26.23	26.23	26.23	99.2	99.5	100.0	6.62	6.64	6.68	1.37	1.33	1.38	4	3.50

Remarks:  
 Single underline denotes exceedance over Action Level.  
 Double underline denotes exceedance over Limit Level.  
 With respect to site closure and suspension of construction activities at Wanchai area, the Water Quality Monitoring Event at WQM stations WSD19, P1, P3, P4, P5 and C1 was temporary suspended from 27 June 2017 to 01 July 2017.



**Water Monitoring Result at RW21-P789 - GEC/CRB/SHK  
Mid-Ebb Tide**

Date	Time	Weather Condition	Sampling Depth		Water Temperature		pH			Salinity		DO Saturation		DO		Turbidity		Suspended Solids						
					°C		-		ppt		%		mg/L		NTU		mg/L							
			m	Value	Average	Value	Average	Value	Average	Value	Average	Value	Average	Value	Average	Value	Average	Value	Average					
28/6/2017	14:45	Fine	Middle	3.5	29.50	29.50	29.55	8.18	8.18	8.16	27.69	27.69	27.69	85.1	85.0	84.7	5.57	5.56	5.54	3.30	3.31	3.28	2	2.50
	14:47		Middle	3.5	29.60	29.60		8.13	8.13		27.69	27.69		84.3	84.3		5.51	5.51		3.31	3.20		3	
30/6/2017	16:00	Fine	Middle	3.5	28.50	28.50	28.65	8.09	8.09	8.12	28.99	28.99	29.00	106.5	106.2	105.6	7.03	6.99	6.97	3.39	3.41	3.45	4	4.00
	16:02		Middle	3.5	28.80	28.80		8.14	8.14		29.00	29.00		105.5	105.0		6.95	6.89		3.56	3.43		4	
3/7/2017	8:15	Cloudy	Middle	3.5	27.80	27.80	27.85	8.12	8.12	8.14	24.90	24.90	24.90	88.1	87.7	87.5	6.02	5.99	5.98	3.99	3.97	3.98	2	2.00
	8:17		Middle	3.5	27.90	27.90		8.15	8.15		24.90	24.90		87.4	86.9		5.96	5.93		3.95	4.00		2	
6/7/2017	10:00	Cloudy	Middle	3.5	27.30	27.30	27.35	7.95	7.95	7.99	23.53	23.53	23.53	86.8	85.8	86.5	6.02	5.95	6.00	3.38	3.33	3.31	5	4.50
	10:02		Middle	3.5	27.40	27.40		8.03	8.03		23.53	23.53		86.8	86.7		6.02	6.01		3.22	3.32		4	
8/7/2017	11:00	Cloudy	Middle	3.5	26.80	26.80	26.80	8.12	8.12	8.14	24.33	24.33	24.33	86.2	86.1	85.9	6.03	6.01	6.00	4.81	4.98	4.95	4	4.00
	11:02		Middle	3.5	26.80	26.80		8.16	8.16		24.33	24.33		86.0	85.1		6.00	5.94		5.02	5.00		4	
10/7/2017	10:45	Fine	Middle	4.0	28.50	28.50	28.60	7.98	7.98	8.03	27.49	27.49	27.48	91.8	89.2	90.8	6.11	5.93	6.03	5.51	5.50	5.48	7	6.00
	10:47		Middle	4.0	28.70	28.70		8.07	8.07		27.47	27.47		90.8	91.3		6.03	6.06		5.46	5.46		5	
13/7/2017	15:35	Fine	Middle	3.5	28.50	28.50	28.80	8.49	8.49	8.52	24.53	24.53	24.53	122.5	122.9	122.1	8.22	8.25	8.19	3.06	3.07	3.07	7	6.00
	15:37		Middle	3.5	29.10	29.10		8.55	8.55		24.53	24.53		121.9	120.9		8.18	8.11		3.08	3.08		5	
15/7/2017	16:40	Cloudy	Middle	3.5	27.40	27.40	89.05	8.33	8.33	8.36	25.98	25.98	25.99	96.5	96.4	95.8	6.61	6.60	6.56	1.56	1.63	1.65	3	3.00
	16:42		Middle	3.5	27.40	27.40		8.38	8.38		25.99	25.99		95.7	94.6		6.55	6.48		1.76	1.65		3	
18/7/2017	-	Amber Rainstorm Warning Signal	Middle	-	-	-	-	-	-	-	-	-	-	-	-	-	-	-	-	-	-	-	-	
	-		Middle	-	-	-	-	-	-	-	-	-	-	-	-	-	-	-	-	-	-	-	-	
20/7/2017	11:25	Fine	Middle	3.5	28.00	28.00	28.03	8.06	8.06	8.07	23.45	23.45	23.42	79.1	78.8	77.5	5.44	5.41	5.32	0.58	0.53	0.61	5	5.00
	11:26		Middle	3.5	28.00	28.10		8.07	8.07		23.38	23.38		77.1	75.0		5.29	5.14		0.67	0.66		5	
22/7/2017	14:27	Fine	Middle	3.0	28.20	28.20	28.70	8.21	8.21	8.21	24.17	24.17	24.22	87.2	87.2	86.9	5.83	5.84	5.82	1.24	1.23	1.23	6	6.50
	14:29		Middle	3.0	29.00	29.40		8.21	8.21		24.27	24.27		86.9	86.4		5.82	5.78		1.22	1.22		7	
24/7/2017	15:45	Cloudy	Middle	3.5	28.40	28.40	28.40	8.15	8.15	8.16	25.67	25.67	25.67	86.3	86.6	86.4	5.81	5.83	5.82	1.39	1.42	1.45	5	4.50
	15:47		Middle	3.5	28.40	28.40		8.16	8.16		25.66	25.66		86.0	86.8		5.80	5.85		1.48	1.51		4	
26/7/2017	15:10	Fine	Middle	3.5	28.90	28.90	29.05	8.04	8.04	8.06	26.44	26.44	26.44	109.9	109.2	108.6	7.29	7.24	7.20	1.43	1.45	1.47	5	5.50
	15:12		Middle	3.5	29.20	29.20		8.08	8.08		26.43	26.43		108.1	107.2		7.17	7.10		1.51	1.49		6	

Remarks:  
Single underline denotes exceedance over Action Level.  
Double underline denotes exceedance over Limit Level.



**Water Monitoring Result at WSD19 - Sheung Wan  
Mid-Ebb Tide**

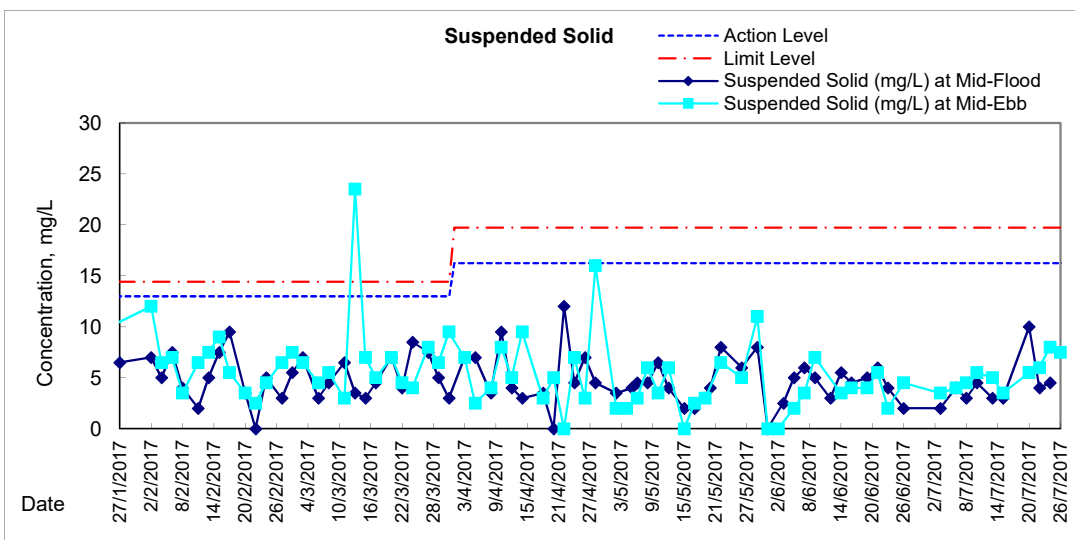
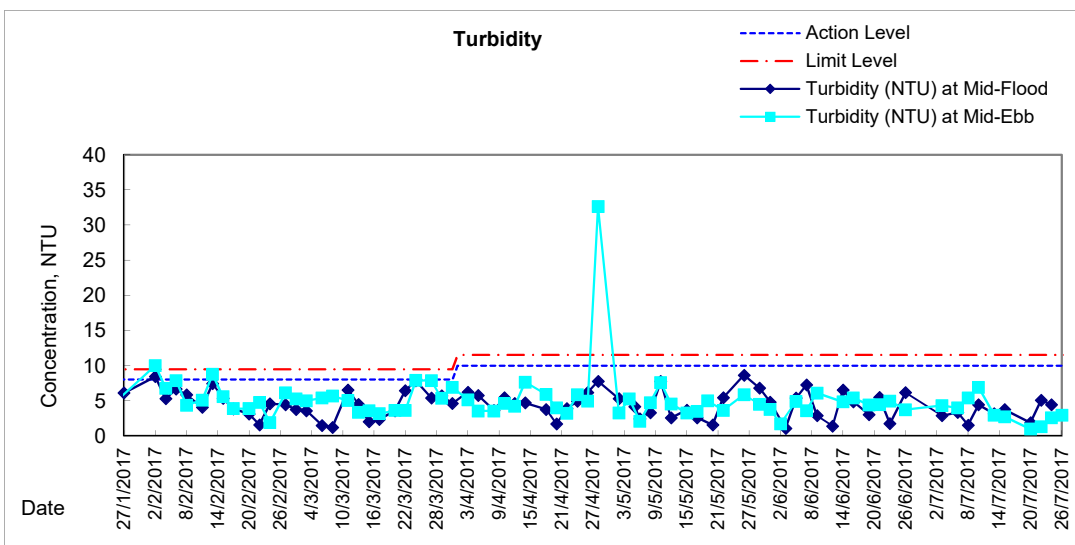
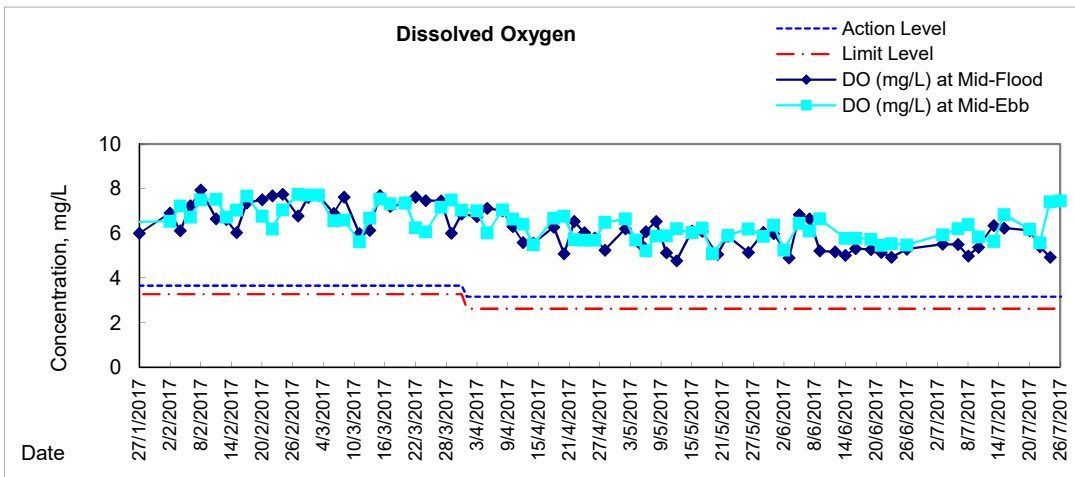
Date	Time	Weather Condition	Sampling Depth		Water Temperature			pH		Salinity		DO Saturation		DO		Turbidity		Suspended Solids						
					°C			-		ppt		%		mg/L		NTU		mg/L						
					Value	Average		Value	Average	Value	Average	Value	Average	Value	Average	Value	Average	Value	Average					
28/6/2017	-	-	Middle	-	-	-	-	-	-	-	-	-	-	-	-	-	-	-	-	-				
	-		Middle	-	-	-	-	-	-	-	-	-	-	-	-	-	-	-	-	-				
30/6/2017	-	-	Middle	-	-	-	-	-	-	-	-	-	-	-	-	-	-	-	-	-				
	-		Middle	-	-	-	-	-	-	-	-	-	-	-	-	-	-	-	-	-				
3/7/2017	9:55	Cloudy	Middle	3.5	28.40	28.40	28.45	8.00	8.06	8.06	23.41	23.41	23.41	87.7	87.9	87.2	5.98	5.94	5.93	4.44	4.36	4.33	3	3.50
	9:57		Middle	3.5	28.50	28.50		8.09	8.09	8.06	23.40	23.40	23.41	87.1	86.1	87.2	5.94	5.87	5.93	4.26	4.25	4.33	4	3.50
6/7/2017	11:30	Cloudy	Middle	3.5	27.60	27.60	27.48	8.02	8.02	8.07	21.41	21.41	21.41	89.1	88.7	88.7	6.23	6.20	6.20	4.02	4.00	3.97	4	4.00
	11:32		Middle	3.5	27.70	27.00		8.11	8.11	8.07	21.41	21.41	21.41	88.7	88.3	88.7	6.19	6.17	6.20	3.92	3.93	3.97	4	4.00
8/7/2017	12:00	Cloudy	Middle	3.5	26.90	26.90	26.90	8.09	8.09	8.13	22.29	22.29	22.29	90.4	91.0	90.7	6.37	6.41	6.39	5.49	5.37	5.38	5	4.50
	12:02		Middle	3.5	26.90	26.90		8.17	8.17	8.13	22.29	22.29	22.29	91.0	90.3	90.7	6.41	6.36	6.39	5.33	5.33	5.38	4	4.50
10/7/2017	13:50	Fine	Middle	4.0	28.90	28.90	29.10	8.13	8.13	8.13	25.47	25.47	25.47	87.7	87.4	87.5	5.85	5.82	5.83	6.94	6.93	6.92	6	5.50
	13:52		Middle	4.0	29.30	29.30		8.13	8.13	8.13	25.46	25.46	25.47	87.3	87.5	87.5	5.81	5.82	5.83	6.92	6.90	6.92	5	5.50
13/7/2017	14:00	Fine	Middle	4.0	29.80	29.80	30.05	8.38	8.38	8.42	22.84	22.84	22.84	88.8	85.4	84.9	5.90	5.68	5.64	3.22	3.09	2.96	5	5.00
	14:02		Middle	4.0	30.30	30.30		8.46	8.46	8.42	22.84	22.84	22.84	83.8	81.7	84.9	5.55	5.41	5.64	2.77	2.77	2.96	5	5.00
15/7/2017	14:05	Cloudy	Middle	3.5	26.90	26.80	26.93	8.27	8.27	8.31	24.95	24.95	24.96	98.9	98.9	98.7	6.86	6.86	6.84	2.77	2.76	2.73	3	3.50
	14:07		Middle	3.5	27.00	27.00		8.34	8.34	8.31	24.96	24.96	24.96	98.9	98.2	98.7	6.86	6.78	6.84	2.73	2.66	2.73	4	3.50
18/7/2017	-	Amber Rainstorm Warning Signal	Middle	-	-	-	-	-	-	-	-	-	-	-	-	-	-	-	-	-	-	-	-	
	-		Middle	-	-	-	-	-	-	-	-	-	-	-	-	-	-	-	-	-	-	-	-	-
20/7/2017	8:50	Fine	Middle	3.0	28.20	28.20	28.25	7.58	7.58	7.64	23.05	23.50	23.13	90.1	90.5	90.2	6.18	6.20	6.18	0.75	0.73	0.96	6	5.50
	8:55		Middle	3.0	28.30	28.30		7.70	7.70	7.64	22.99	22.99	23.13	90.3	90.0	90.2	6.18	6.16	6.18	1.18	1.18	0.96	5	5.50
22/7/2017	10:44	Fine	Middle	3.5	28.70	28.70	28.90	8.22	8.22	8.23	12.02	12.02	12.00	80.8	77.8	77.4	5.82	5.61	5.57	1.28	1.29	1.28	6	6.00
	10:46		Middle	3.5	29.10	29.10		8.23	8.23	8.23	11.98	11.98	12.00	76.4	74.7	77.4	5.50	5.36	5.57	1.28	1.28	1.28	6	6.00
24/7/2017	14:10	Cloudy	Middle	3.5	28.60	28.60	28.65	8.01	8.01	8.03	25.63	25.63	25.63	110.7	110.9	110.4	7.44	7.45	7.41	2.31	2.66	2.56	7	8.00
	14:12		Middle	3.5	28.70	28.70		8.04	8.04	8.03	25.63	25.63	25.63	110.0	109.9	110.4	7.38	7.37	7.41	2.68	2.59	2.56	9	8.00
26/7/2017	13:35	Fine	Middle	4.0	30.80	30.80	31.00	7.76	7.76	7.81	25.75	25.75	25.75	116.7	116.2	115.6	7.53	7.49	7.45	3.03	2.90	2.95	7	7.50
	13:37		Middle	4.0	31.20	31.20		7.85	7.85	7.81	25.75	25.75	25.75	115.0	114.5	115.6	7.41	7.37	7.45	2.90	2.95	2.95	8	7.50

Remarks:  
 Single underline denotes exceedance over Action Level.  
 Double underline denotes exceedance over Limit Level.  
 With respect to site closure and suspension of construction activities at Wanchai area, the Water Quality Monitoring Event at WQM stations WSD19, P1, P3, P4, P5 and C1 was temporary suspended from 27 June 2017 to 01 July 2017.

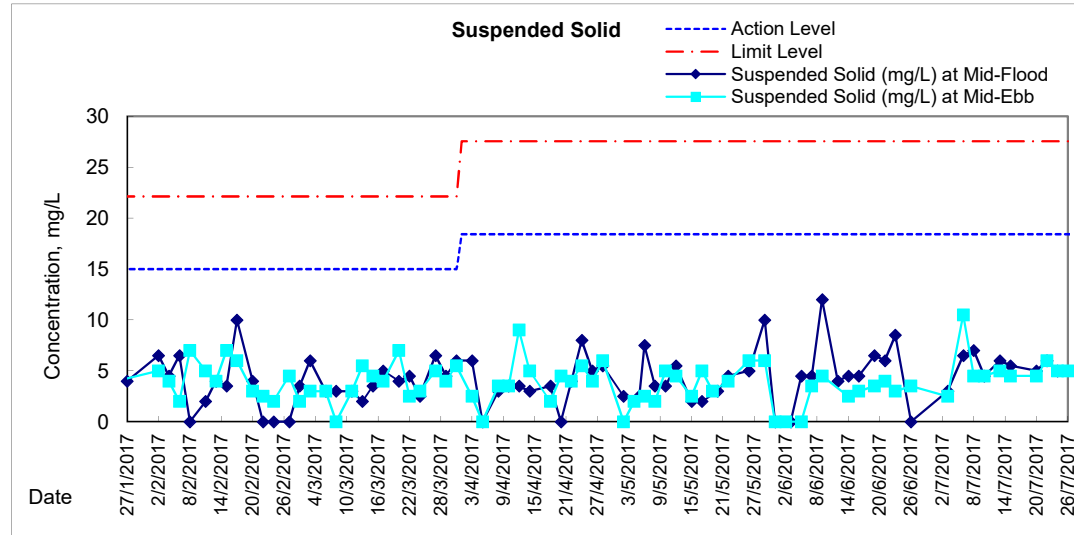
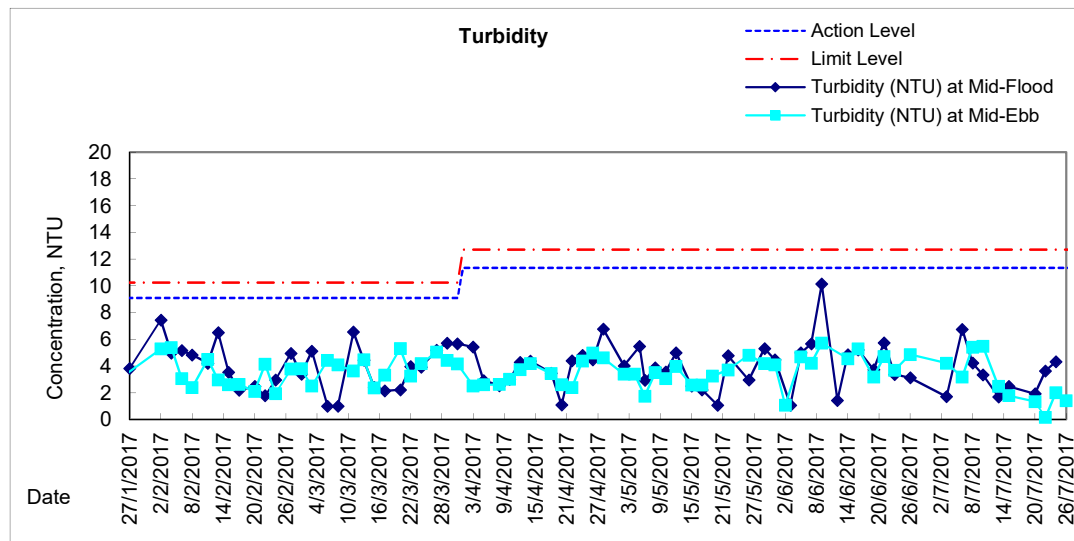
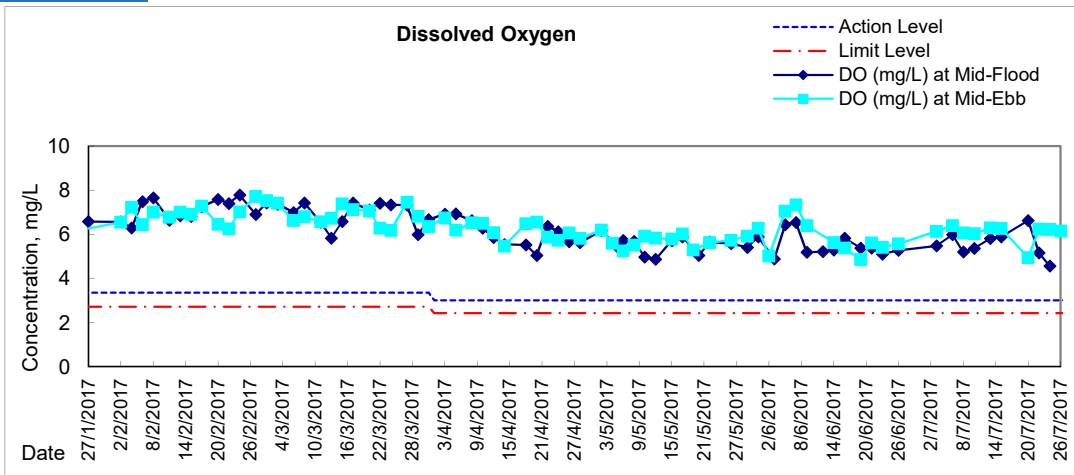




# Graphic Presentation of Water Quality Result of WSD19 - Sheung Wan

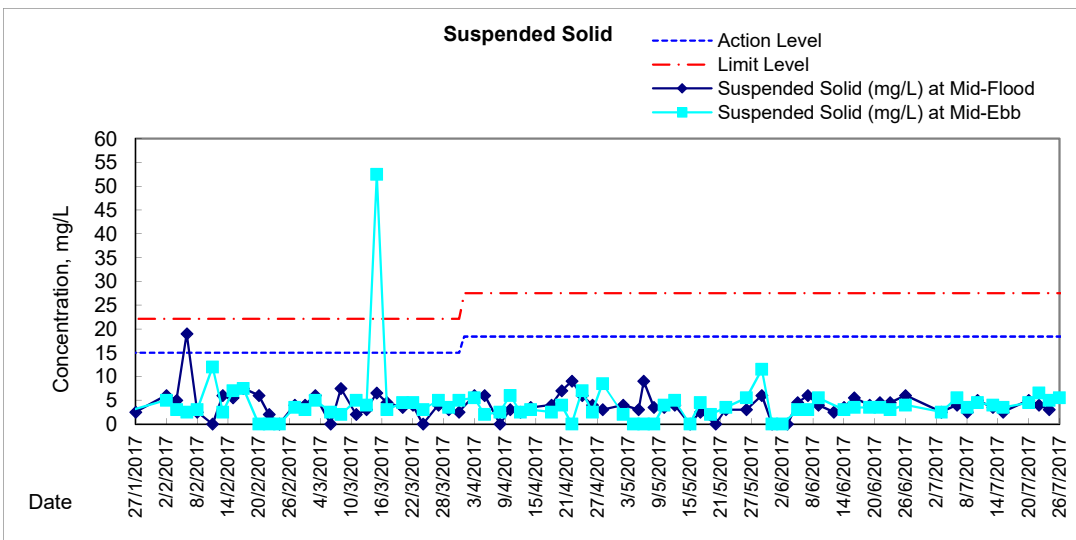
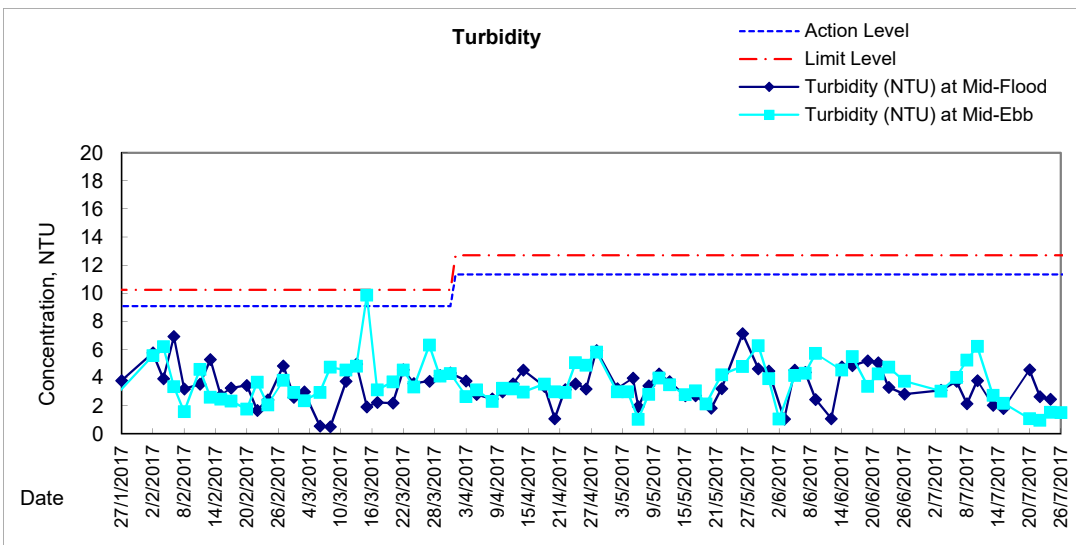
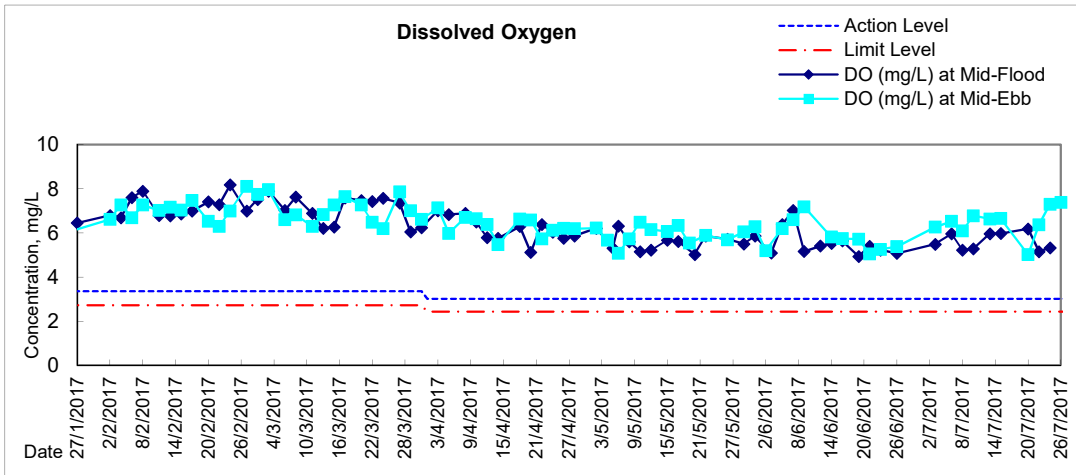


### Graphic Presentation of Water Quality Result of C1 - HKCEC



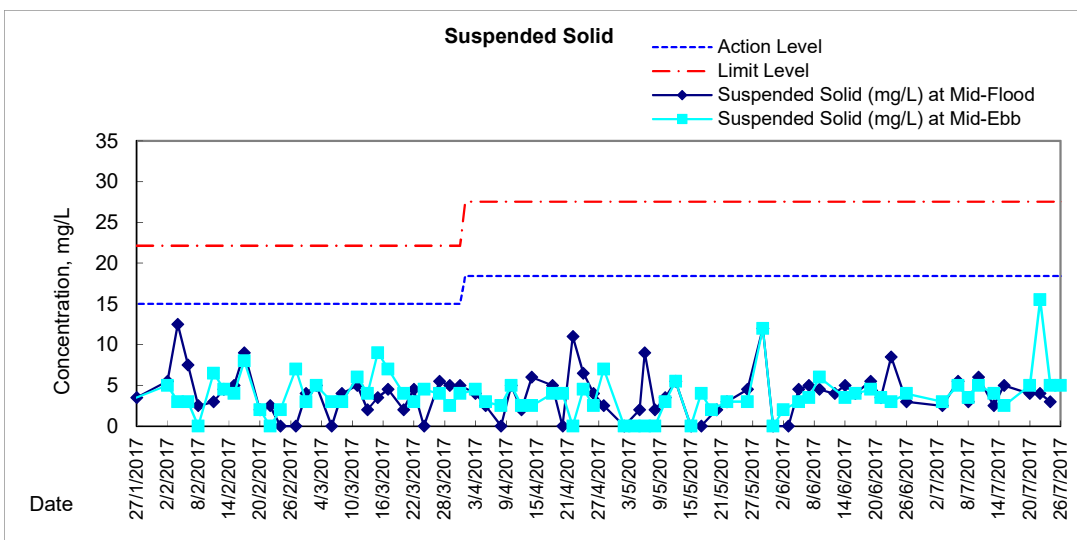
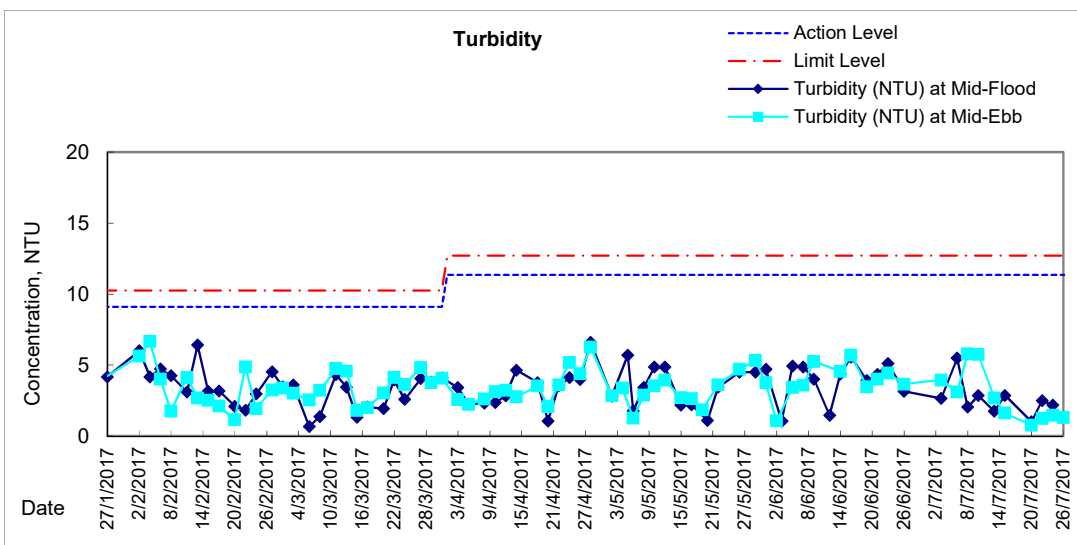
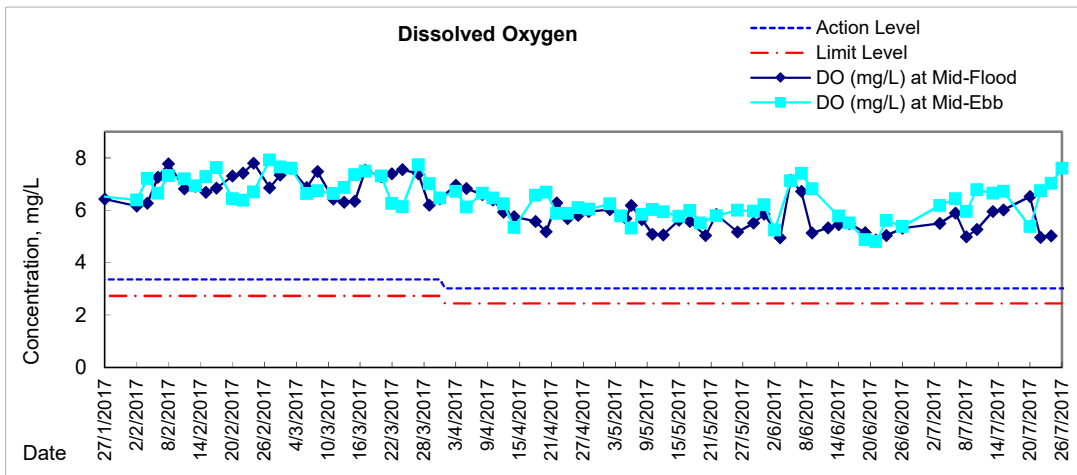


# Graphic Presentation of Water Quality Result of P1 - HKCEC Phase I



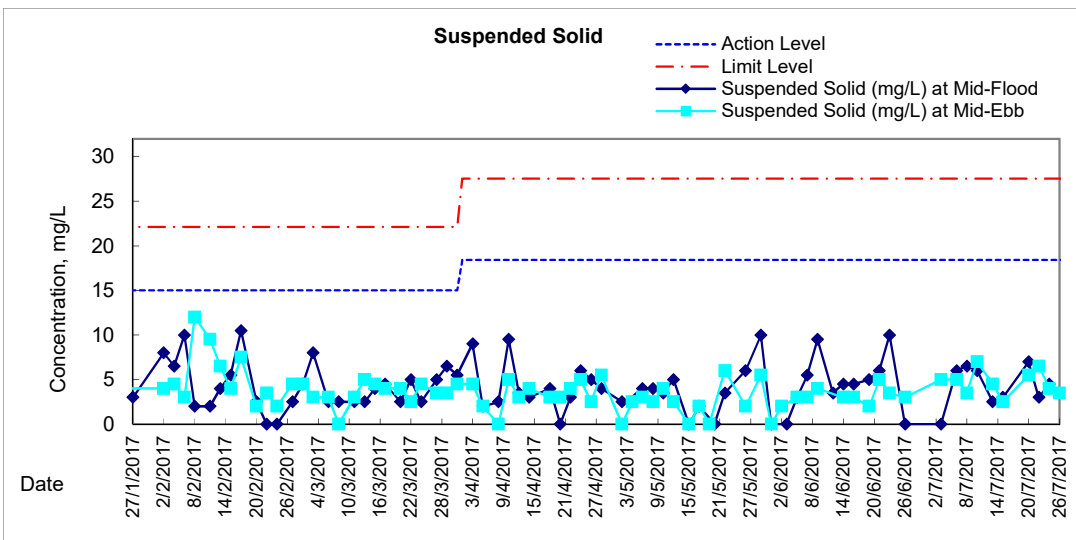
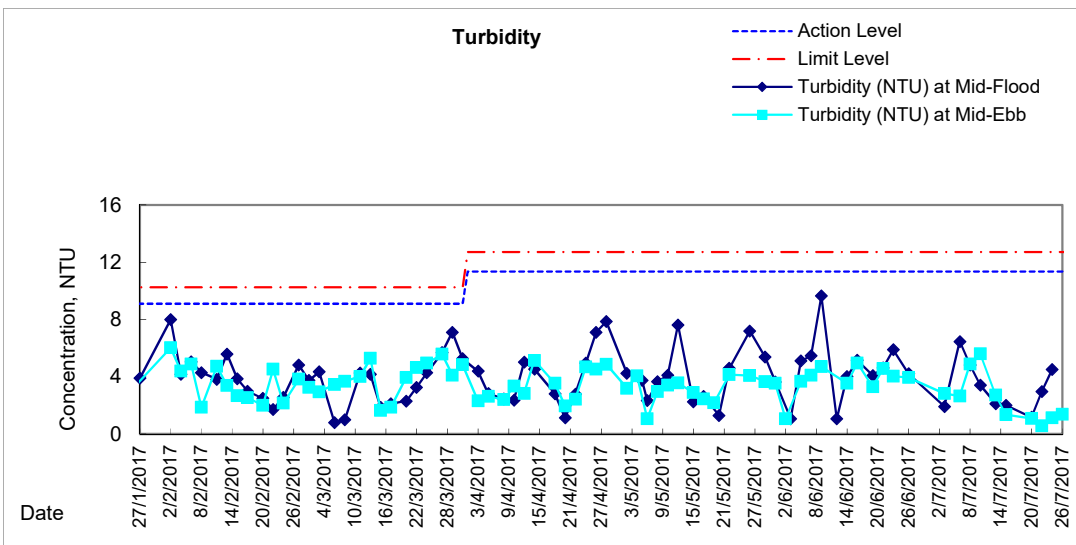
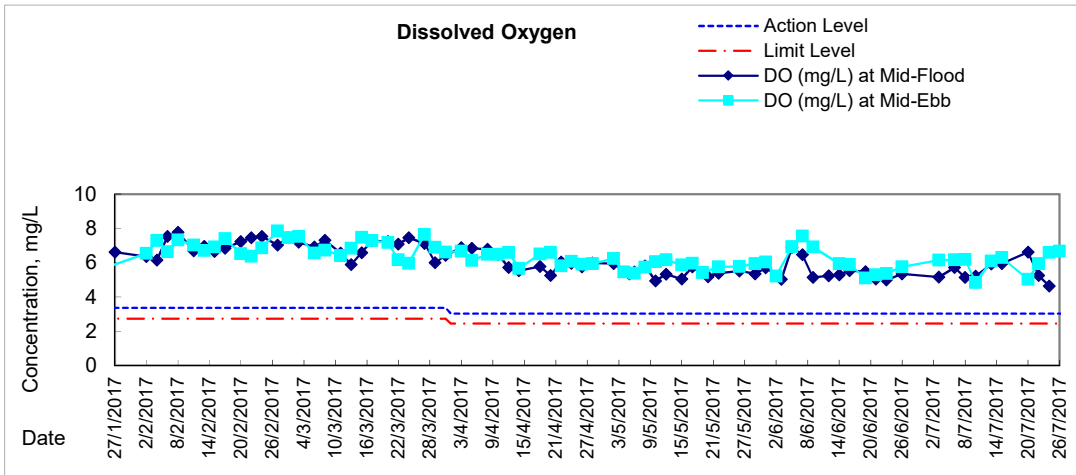


# Graphic Presentation of Water Quality Result of P3 - APA



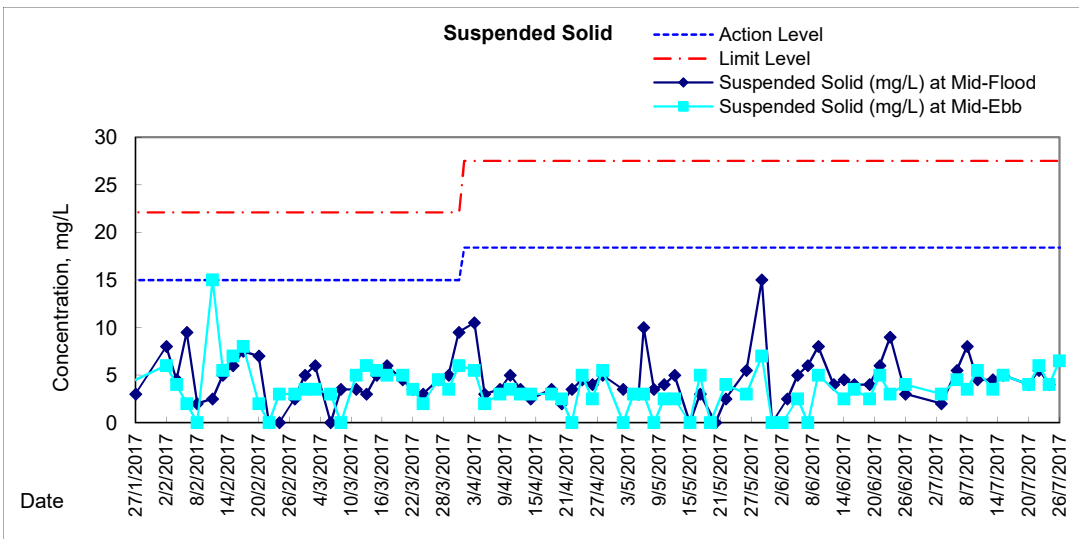
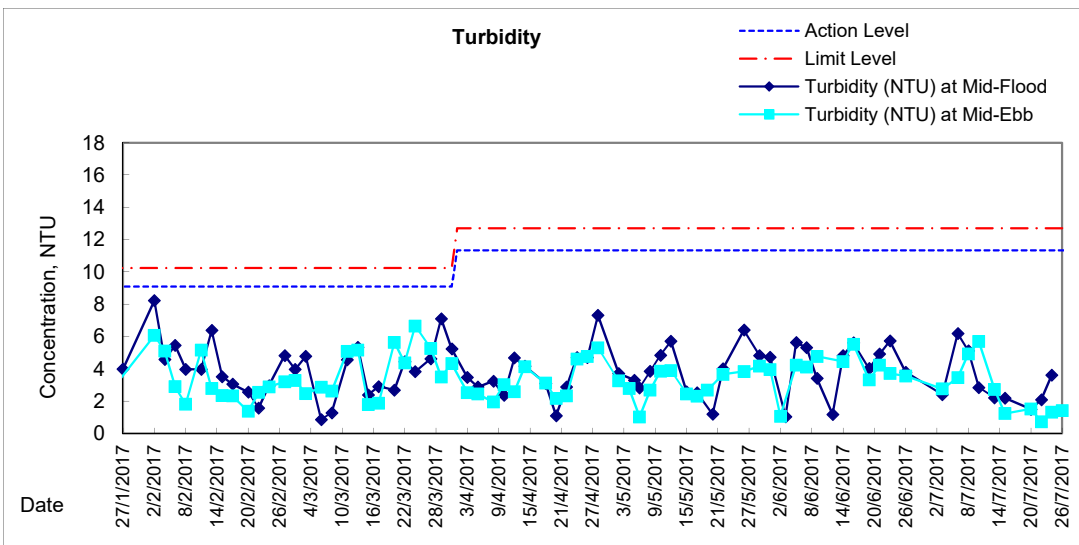
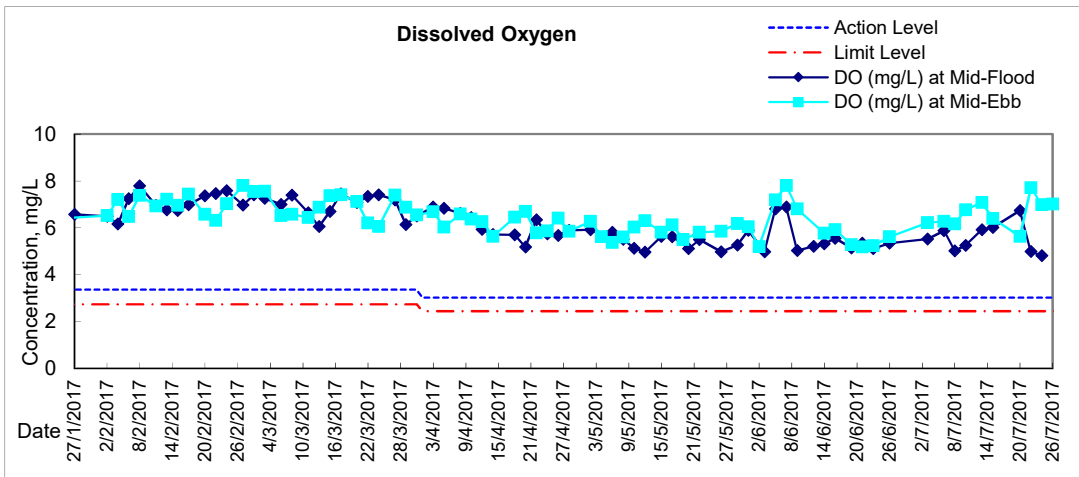


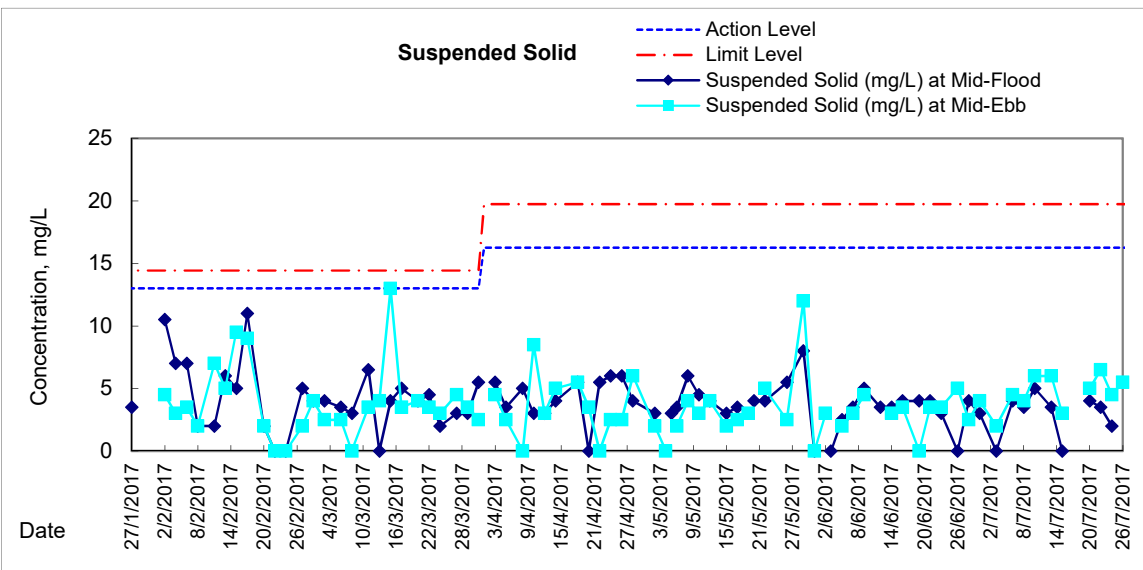
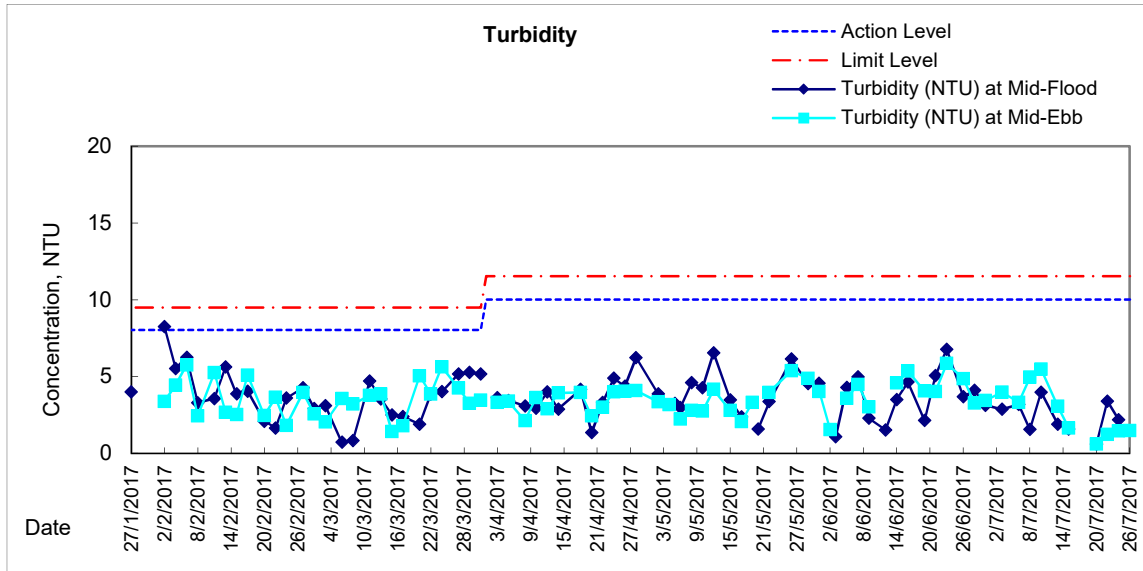
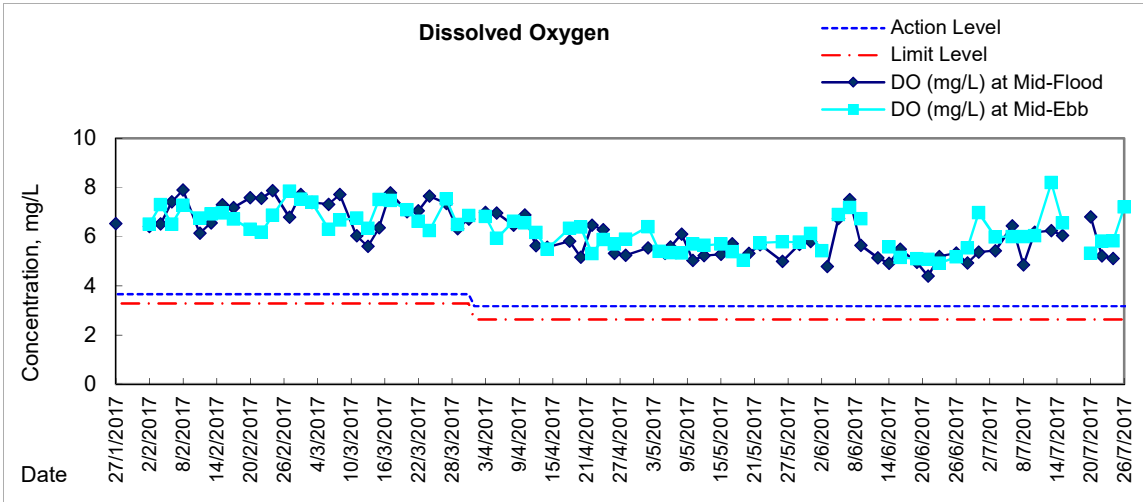
### Graphic Presentation of Water Quality Result of P5 - WCT / RT / IT



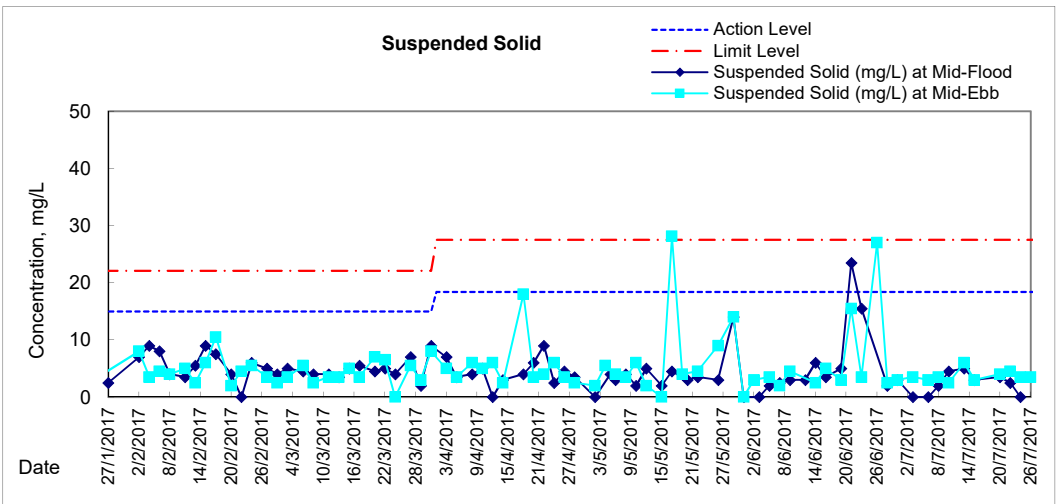
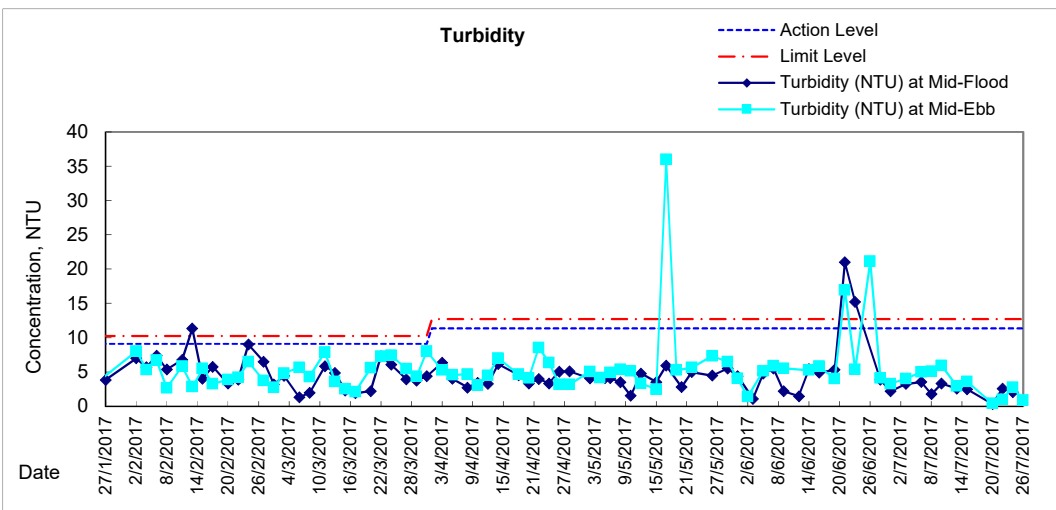
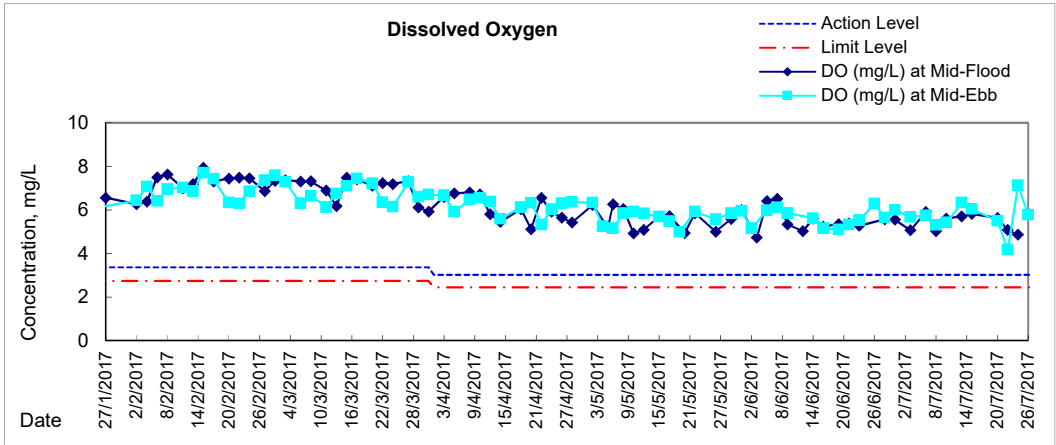


### Graphic Presentation of Water Quality Result of P4 - SOC





### Graphic Presentation of Water Quality Result of C7 - Windsor House







**Water Monitoring Result at C6 - Excelsior Hotel  
Mid-Flood Tide**

Date	Time	Weather Condition	Sampling Depth		Water Temperature			pH			Salinity			DO Saturation			DO			
					°C			-			ppt			%			mg/L			
			m	Value	Average	Value	Average	Value	Average	Value	Average	Value	Average	Value	Average	Value	Average			
28/6/2017	10:00	Fine	Surface	1.0	27.10	27.10	27.1	7.92	7.92	7.9	26.25	26.25	26.3	86.4	86.4	86.4	5.92	5.92	5.92	
	-		Middle	2.0	-	-	-	-	-	-	-	-	-	-	-	-	-	-	-	-
	10:05		Bottom	3.0	27.00	27.00	27.0	7.96	7.96	8.0	26.80	26.80	26.8	86.2	87.3	86.8	5.90	5.80	5.85	
30/6/2017	-	Fine	Surface	-	-	-	-	-	-	-	-	-	-	-	-	-	-	-	-	
	11:45		Middle	1.5	28.80	28.80	28.8	7.99	7.99	8.0	28.52	28.52	28.5	79.8	79.9	79.9	5.25	5.25	5.25	
	-		Bottom	-	-	-	-	-	-	-	-	-	-	-	-	-	-	-	-	-
3/7/2017	-	Cloudy	Surface	-	-	-	-	-	-	-	-	-	-	-	-	-	-	-	-	
	1:50		Middle	1.5	27.40	27.40	27.4	7.94	7.94	7.9	23.10	23.10	23.1	75.7	76.5	76.1	5.26	5.32	5.29	
	-		Bottom	-	-	-	-	-	-	-	-	-	-	-	-	-	-	-	-	-
6/7/2017	-	Cloudy	Surface	-	-	-	-	-	-	-	-	-	-	-	-	-	-	-	-	
	15:50		Middle	1.5	27.60	27.60	27.6	8.14	8.14	8.1	21.68	21.68	21.7	91.1	91.1	91.1	6.35	6.35	6.35	
	-		Bottom	-	-	-	-	-	-	-	-	-	-	-	-	-	-	-	-	-
8/7/2017	-	Cloudy	Surface	-	-	-	-	-	-	-	-	-	-	-	-	-	-	-	-	
	18:15		Middle	1.5	27.00	27.00	27.0	7.60	7.60	7.6	23.75	23.78	23.8	72.3	73.5	72.9	4.88	4.96	4.92	
	-		Bottom	-	-	-	-	-	-	-	-	-	-	-	-	-	-	-	-	-
10/7/2017	-	Cloudy	Surface	-	-	-	-	-	-	-	-	-	-	-	-	-	-	-	-	
	20:13		Middle	1.5	27.70	27.70	27.7	7.94	7.95	7.9	24.84	24.84	24.8	86.5	86.7	86.6	5.93	5.95	5.94	
	-		Bottom	-	-	-	-	-	-	-	-	-	-	-	-	-	-	-	-	-
13/7/2017	10:55	Fine	Surface	1.0	28.40	28.40	28.4	8.27	8.27	8.3	24.26	24.26	24.3	99.6	100.3	100.0	6.76	6.81	6.79	
	-		Middle	2.0	-	-	-	-	-	-	-	-	-	-	-	-	-	-	-	
	10:57		Bottom	3.0	28.40	28.40	28.4	8.32	8.32	8.3	24.55	24.55	24.6	90.3	90.3	90.3	6.13	6.13	6.13	
15/7/2017	-	Fine	Surface	-	-	-	-	-	-	-	-	-	-	-	-	-	-	-	-	
	8:35		Middle	1.5	28.10	28.10	28.1	8.18	8.18	8.2	25.42	25.42	25.4	90.2	90.0	90.1	6.11	6.10	6.11	
	-		Bottom	-	-	-	-	-	-	-	-	-	-	-	-	-	-	-	-	-
18/7/2017	-	Amber Rainstorm Warning Signal	Surface	-	-	-	-	-	-	-	-	-	-	-	-	-	-	-	-	
	-		Middle	-	-	-	-	-	-	-	-	-	-	-	-	-	-	-	-	
	-		Bottom	-	-	-	-	-	-	-	-	-	-	-	-	-	-	-	-	-
20/7/2017	-	Fine	Surface	-	-	-	-	-	-	-	-	-	-	-	-	-	-	-	-	
	17:20		Middle	1.5	27.70	27.70	27.7	8.21	8.21	8.2	22.61	22.61	22.6	91.0	89.5	90.3	6.31	6.21	6.26	
	-		Bottom	-	-	-	-	-	-	-	-	-	-	-	-	-	-	-	-	-
22/7/2017	-	Fine	Surface	-	-	-	-	-	-	-	-	-	-	-	-	-	-	-	-	
	17:45		Middle	1.0	28.90	28.90	28.9	7.90	7.90	7.9	24.59	24.60	24.6	81.7	82.6	82.2	5.49	5.57	5.53	
	-		Bottom	-	-	-	-	-	-	-	-	-	-	-	-	-	-	-	-	-
24/7/2017	-	Cloudy	Surface	-	-	-	-	-	-	-	-	-	-	-	-	-	-	-	-	
	18:12		Middle	1.0	28.00	28.00	28.0	7.84	7.84	7.8	24.76	24.76	24.8	74.4	74.3	74.4	5.07	5.06	5.07	
	-		Bottom	-	-	-	-	-	-	-	-	-	-	-	-	-	-	-	-	-
26/7/2017	-	Cloudy	Surface	-	-	-	-	-	-	-	-	-	-	-	-	-	-	-	-	
	4:52		Middle	1.0	27.80	27.80	27.8	7.87	7.87	7.9	26.24	26.24	26.2	65.5	65.2	65.4	4.44	4.43	4.44	
	-		Bottom	-	-	-	-	-	-	-	-	-	-	-	-	-	-	-	-	-

Remarks:  
Single underline denotes exceedance over Action Level.  
Double underline denotes exceedance over Limit Level.



**Water Monitoring Result at C6 - Excelsior Hotel  
Mid-Ebb Tide**

Date	Time	Weather Condition	Sampling Depth		Water Temperature			pH			Salinity			DO Saturation			DO		
					°C			-			ppt			%			mg/L		
			m	Value	Average	Value	Average	Value	Average	Value	Average	Value	Average	Value	Average	Value	Average		
28/6/2017	-	Fine	Surface	-	-	-	-	-	-	-	-	-	-	-	-	-	-	-	
	16:00		Middle	2	28.90	28.90	28.9	8.07	8.07	8.1	26.53	26.53	26.5	88.9	88.3	88.6	5.86	5.82	5.84
	-		Bottom	-	-	-	-	-	-	-	-	-	-	-	-	-	-	-	-
30/6/2017	-	Fine	Surface	-	-	-	-	-	-	-	-	-	-	-	-	-	-	-	-
	17:45		Middle	2	28.70	28.70	28.7	8.05	8.05	8.1	27.58	27.58	27.6	95.4	95.0	95.2	6.29	6.27	6.28
	-		Bottom	-	-	-	-	-	-	-	-	-	-	-	-	-	-	-	-
3/7/2017	-	Cloudy	Surface	-	-	-	-	-	-	-	-	-	-	-	-	-	-	-	-
	8:30		Middle	2	27.80	27.80	27.8	8.09	8.09	8.1	24.62	24.62	24.6	84.6	85.7	85.2	5.78	5.86	5.82
	-		Bottom	-	-	-	-	-	-	-	-	-	-	-	-	-	-	-	-
6/7/2017	-	Cloudy	Surface	-	-	-	-	-	-	-	-	-	-	-	-	-	-	-	-
	10:30		Middle	2	27.00	27.00	27.0	7.98	7.98	8.0	23.35	23.35	23.4	79.5	79.0	79.3	5.55	5.52	5.54
	-		Bottom	-	-	-	-	-	-	-	-	-	-	-	-	-	-	-	-
8/7/2017	9:25	Cloudy	Surface	1	27.40	27.40	27.4	8.03	8.03	8.0	23.59	23.59	23.6	83.6	83.4	83.5	5.79	5.78	5.79
	-		Middle	2	-	-	-	-	-	-	-	-	-	-	-	-	-	-	-
	9:27		Bottom	3	27.00	27.00	27.0	8.08	8.08	8.1	24.11	24.11	24.1	87.8	88.1	88.0	6.11	6.13	6.12
10/7/2017	10:05	Fine	Surface	1	28.00	28.00	28.0	8.06	8.06	8.1	26.10	26.10	26.1	94.9	95.2	95.1	6.39	6.41	6.40
	-		Middle	2	-	-	-	-	-	-	-	-	-	-	-	-	-	-	-
	10:07		Bottom	3	27.50	27.50	27.5	8.15	8.15	8.2	26.38	26.38	26.4	90.4	90.7	90.6	6.15	6.16	6.16
13/7/2017	-	Fine	Surface	-	-	-	-	-	-	-	-	-	-	-	-	-	-	-	-
	15:45		Middle	2	28.70	28.70	28.7	8.42	8.42	8.4	24.59	24.59	24.6	100.6	100.8	100.7	6.76	6.77	6.77
	-		Bottom	-	-	-	-	-	-	-	-	-	-	-	-	-	-	-	-
15/7/2017	-	Cloudy	Surface	-	-	-	-	-	-	-	-	-	-	-	-	-	-	-	-
	15:35		Middle	2	27.90	27.90	27.9	8.29	8.29	8.3	23.63	23.63	23.6	83.8	84.6	84.2	5.76	5.82	5.79
	-		Bottom	-	-	-	-	-	-	-	-	-	-	-	-	-	-	-	-
18/7/2017	-	Amber Rainstorm Warning Signal	Surface	-	-	-	-	-	-	-	-	-	-	-	-	-	-	-	-
	-		Middle	-	-	-	-	-	-	-	-	-	-	-	-	-	-	-	-
	-		Bottom	-	-	-	-	-	-	-	-	-	-	-	-	-	-	-	-
20/7/2017	8:10	Fine	Surface	1	27.70	27.70	27.7	7.15	7.15	7.2	22.41	22.41	22.4	79.1	79.6	79.4	5.48	5.52	5.50
	-		Middle	2	-	-	-	-	-	-	-	-	-	-	-	-	-	-	-
	8:12		Bottom	3	27.80	27.80	27.8	7.32	7.32	7.3	22.03	22.03	22.0	83.4	84.6	84.0	5.79	5.88	5.84
22/7/2017	-	Fine	Surface	-	-	-	-	-	-	-	-	-	-	-	-	-	-	-	-
	11:52		Middle	2	28.70	28.70	28.7	8.18	8.18	8.2	24.21	24.21	24.2	72.3	74.2	73.3	4.86	4.98	4.92
	-		Bottom	-	-	-	-	-	-	-	-	-	-	-	-	-	-	-	-
24/7/2017	12:05	Cloudy	Surface	1	28.60	28.60	28.6	7.92	7.92	7.9	25.18	25.18	25.2	102.6	102.2	102.4	6.90	6.87	6.89
	-		Middle	2	-	-	-	-	-	-	-	-	-	-	-	-	-	-	-
	12:07		Bottom	3	28.10	28.10	28.1	7.98	7.98	8.0	24.76	24.76	24.8	107.4	109.5	108.5	7.30	7.44	7.37
26/7/2017	-	Cloudy	Surface	-	-	-	-	-	-	-	-	-	-	-	-	-	-	-	-
	15:20		Middle	2	29.20	29.20	29.2	8.08	8.08	8.1	24.59	24.59	24.6	103.3	103.2	103.3	6.88	6.87	6.87
	-		Bottom	-	-	-	-	-	-	-	-	-	-	-	-	-	-	-	-

Remarks:  
Single underline denotes exceedance over Action Level.  
Double underline denotes exceedance over Limit Level.

### Graphic Presentation of Enhanced Water Monitoring Results (DO) at C6 - Excelsior Hotel

